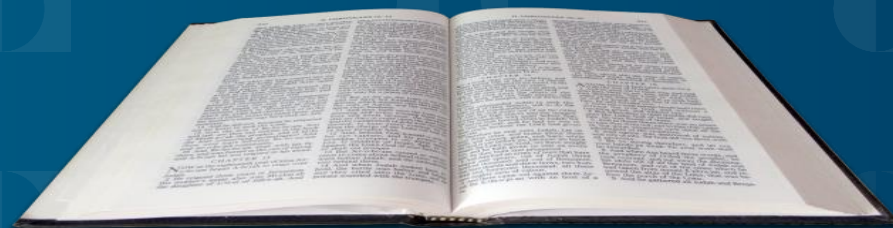


Rocks, Fossils,

A large, flat-topped red sandstone rock formation, Uluru, dominates the center of the image. The rock face is textured with vertical ridges and shadows. The foreground is filled with green and yellowish grasses and shrubs. The sky is a clear, pale blue with a few wispy white clouds.

And the Age of the Earth

If I have spoken to you of earthly things and you do not believe; how then will you believe if I speak of heavenly things?



John 5:12

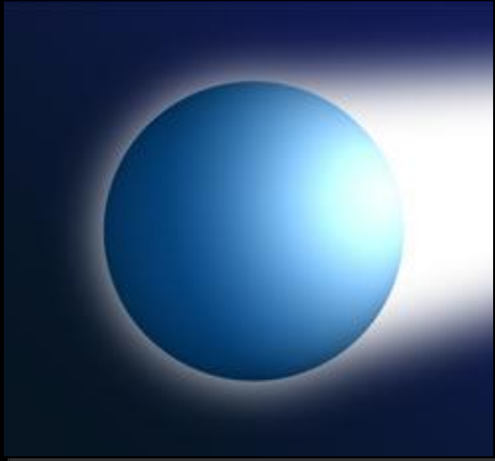




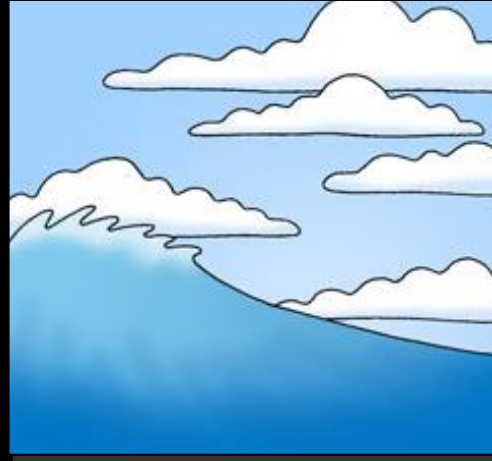


The Days of Creation

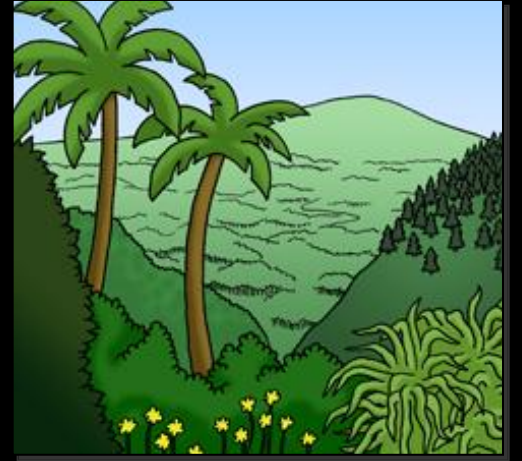
1



2



3



4



5



6



Genesis 1

GAP

GENESIS

The Creation of the World

1 In the beginning, God created the heavens and the earth. The earth was without form and void, and darkness was over the face of the deep. And the Spirit of God was hovering over the face of the waters.

3 And God said, "Let there be light," and there was light. **4** And God saw that the light was good. And God separated the light from the darkness. **5** God called the light Day, and the darkness he called Night. And there was evening and there was morning, the first day.

6 And God said, "Let there be an expanse¹ in the midst

tures according to
things and beasts
And it was so. ²⁵ A
according to their
their kinds, and ev
according to its kin

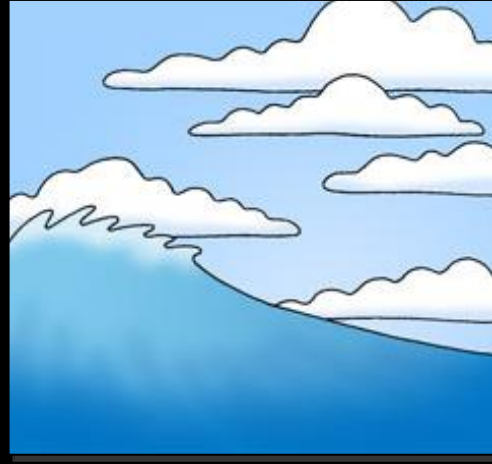
²⁶ Then God said
after our likeness.
the fish of the sea a
over the livestock a
creeping thing that

The Days of Creation

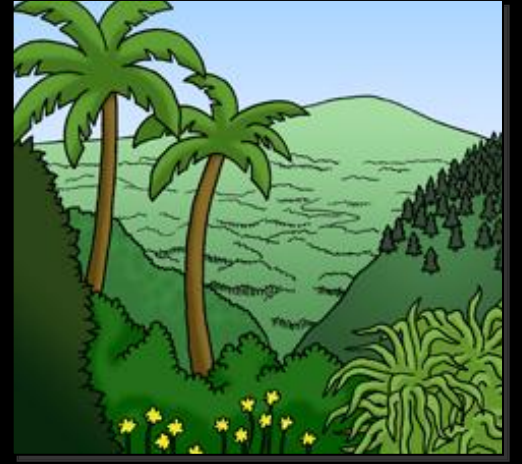
1



2



3



4



5


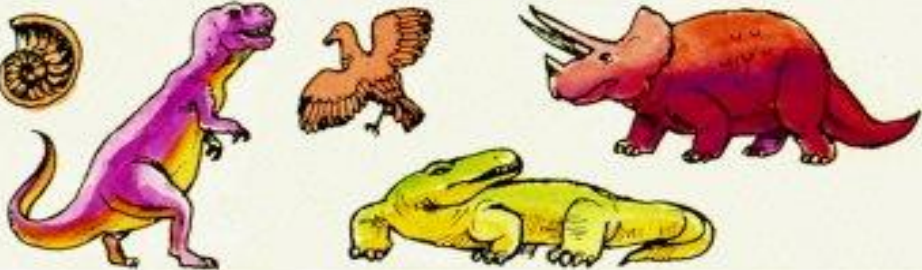



6



Genesis 1

GEOLOGIC TIME SCALE

MY bp	PERIOD	EPOCH	SUCCESSION OF LIFE		ERA
2.5	QUATERNARY Rise of Man	Recent Pleistocene			CENOZOIC
	TERTIARY Rise of mammals	Pliocene Miocene Oligocene Eocene			
65	CRETACEOUS Modern seed bearing plants, Dinosaurs				MESOZOIC
136	JURASSIC First birds				
190	TRIASSIC Cycads, first dinosaurs				
225	PERMIAN First reptiles				PALEOZOIC
280	CARBONIFEROUS PENNSYLVANIAN First insects				
325	MISSISSIPPIAN Many crinoids				
345	DEVONIAN First seed plants, cartilage fish				
395	SILURIAN Earliest land animals				
430	ORDOVICIAN Early bony fish				
500	CAMBRIAN Invertebrate animals, Brachiopods, Trilobites				
600	PRECAMBRIAN Bacteria, Algae, Jellyfish				

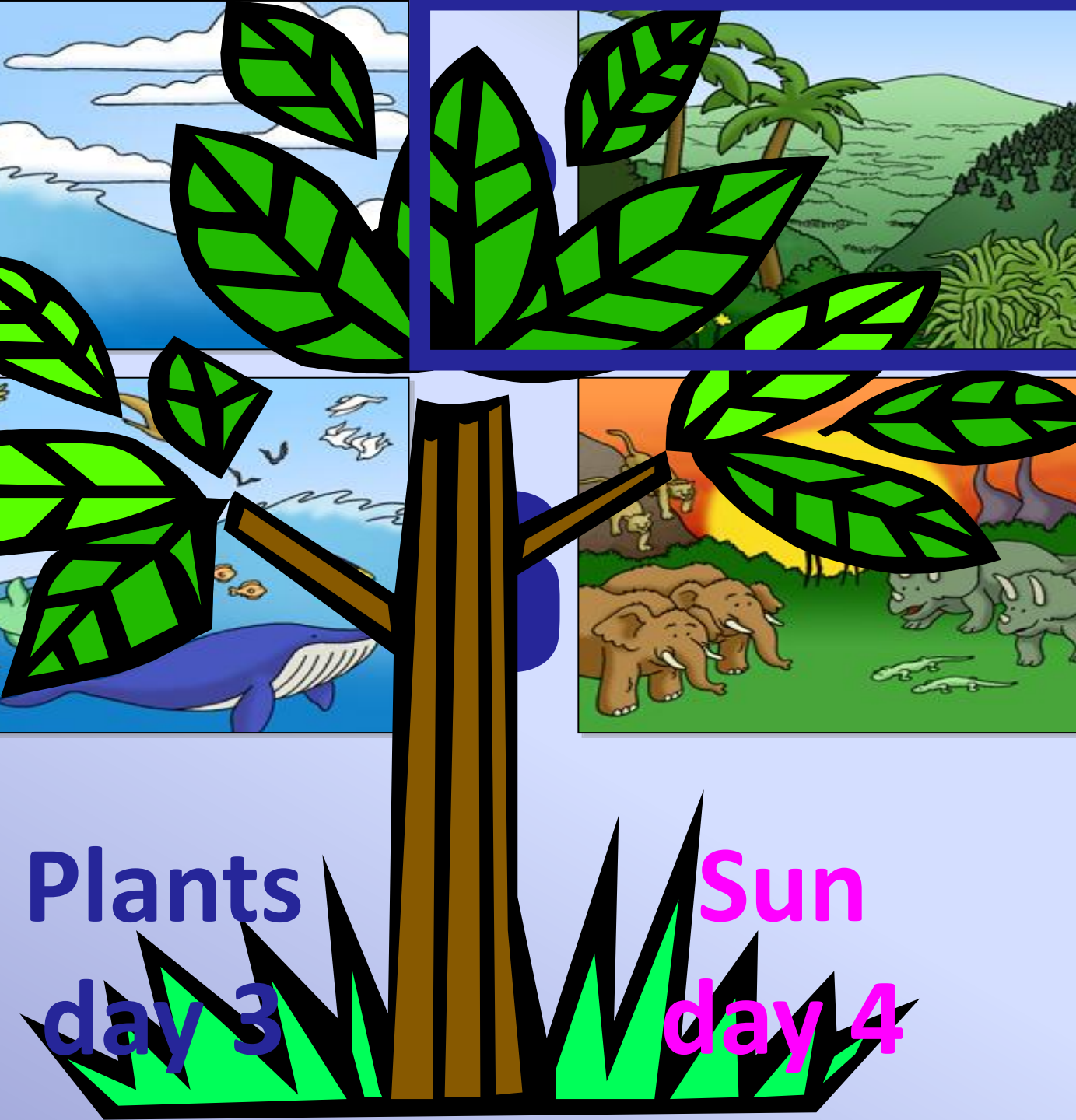
Pre-Life basement rocks to 4.6 billion years old



What came first: The sun or land plants?

Plants
day 3

Sun
day 4



Back in my father's day



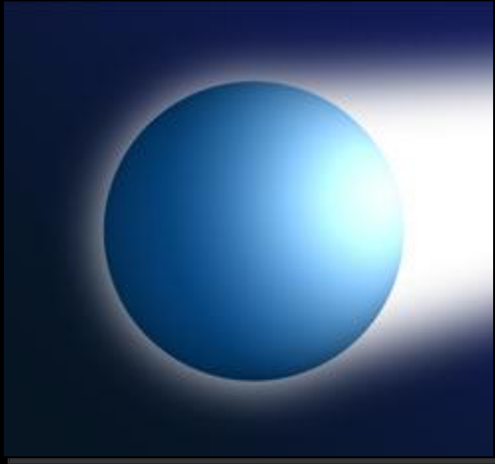
it took 10 days to drive

across Australia
during the day

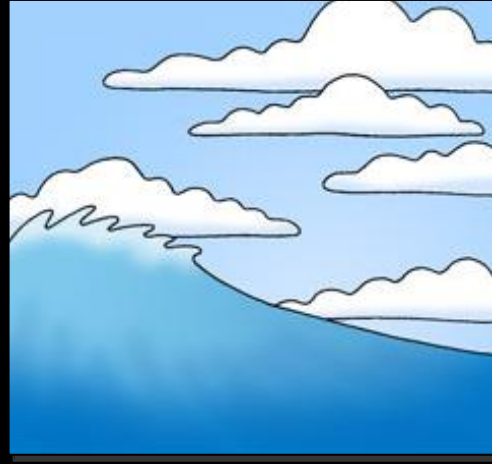


The Days of Creation

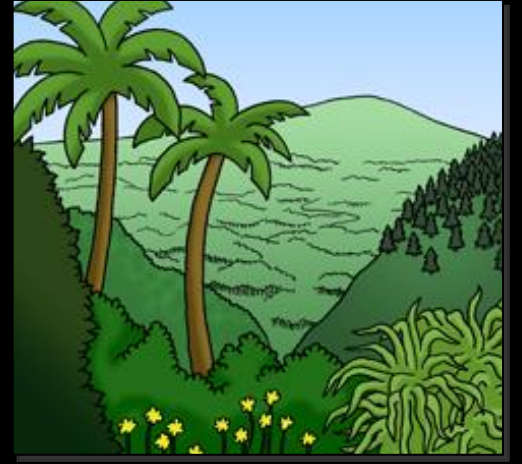
1



2



3



4



5



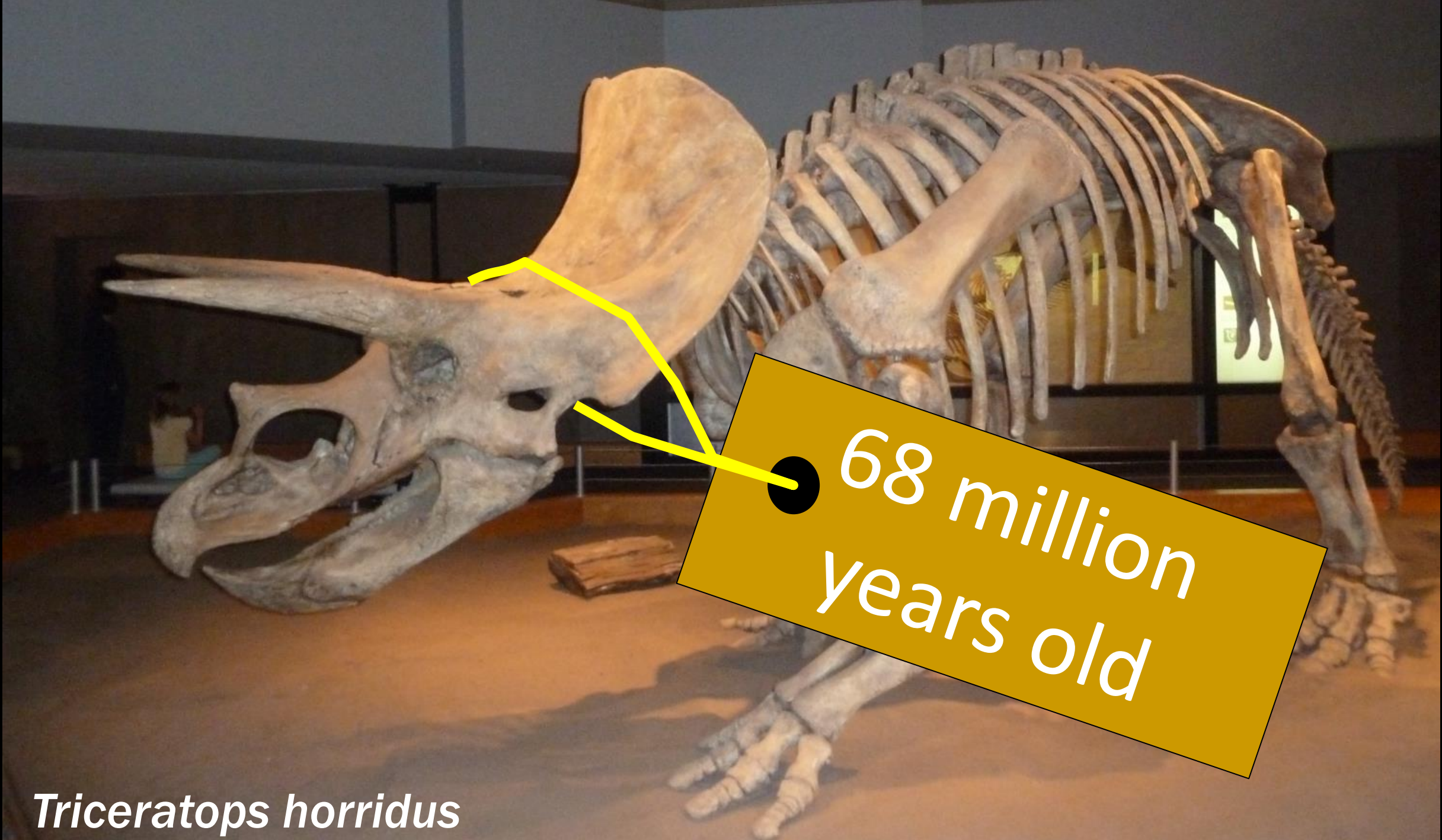
6



Genesis 1

WELCOME TO
DRUMHELLER



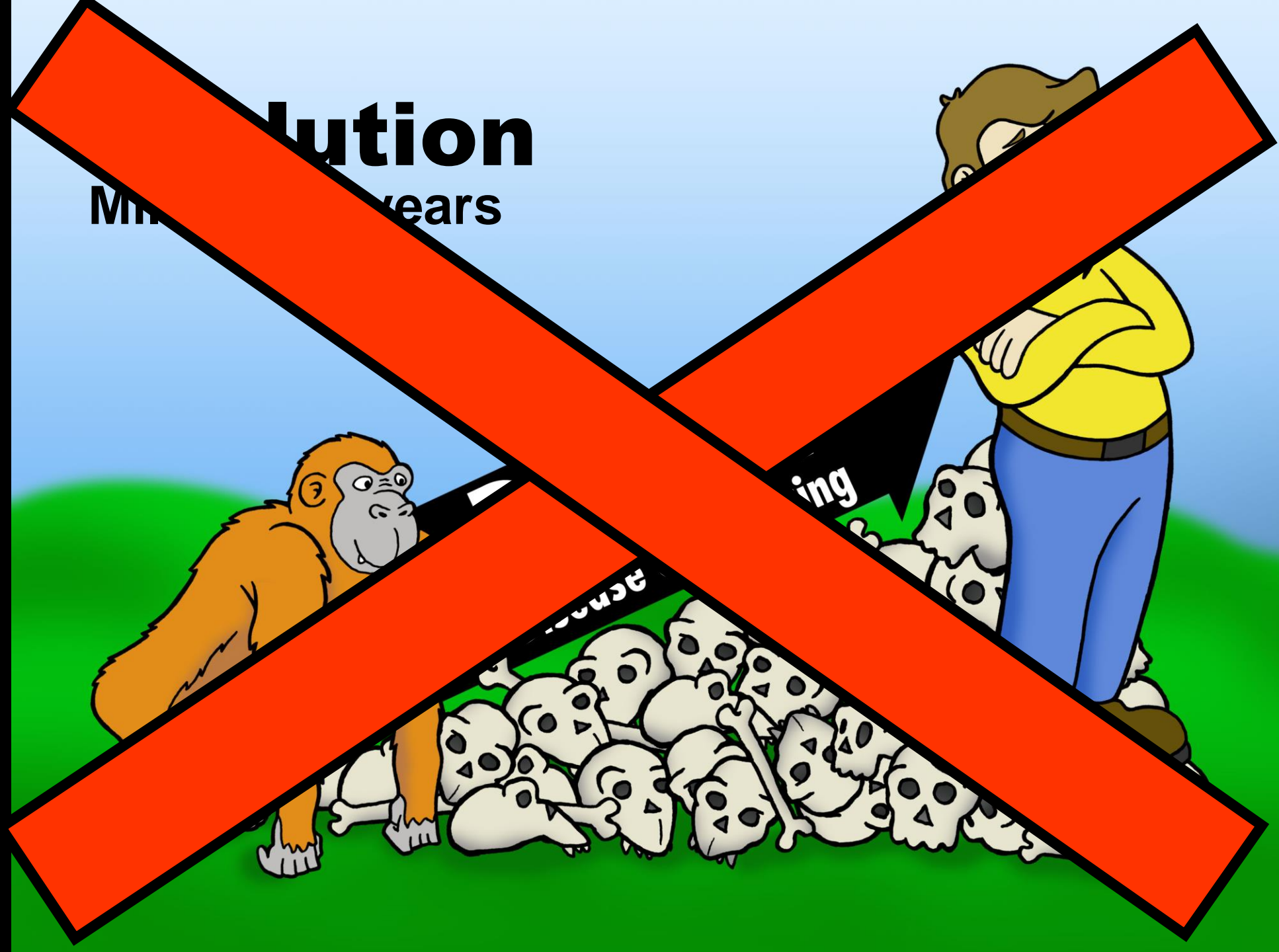


68 million years old

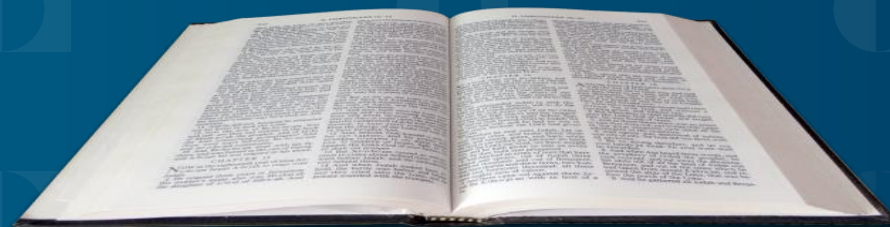
Triceratops horridus

Evolution

Millions of years



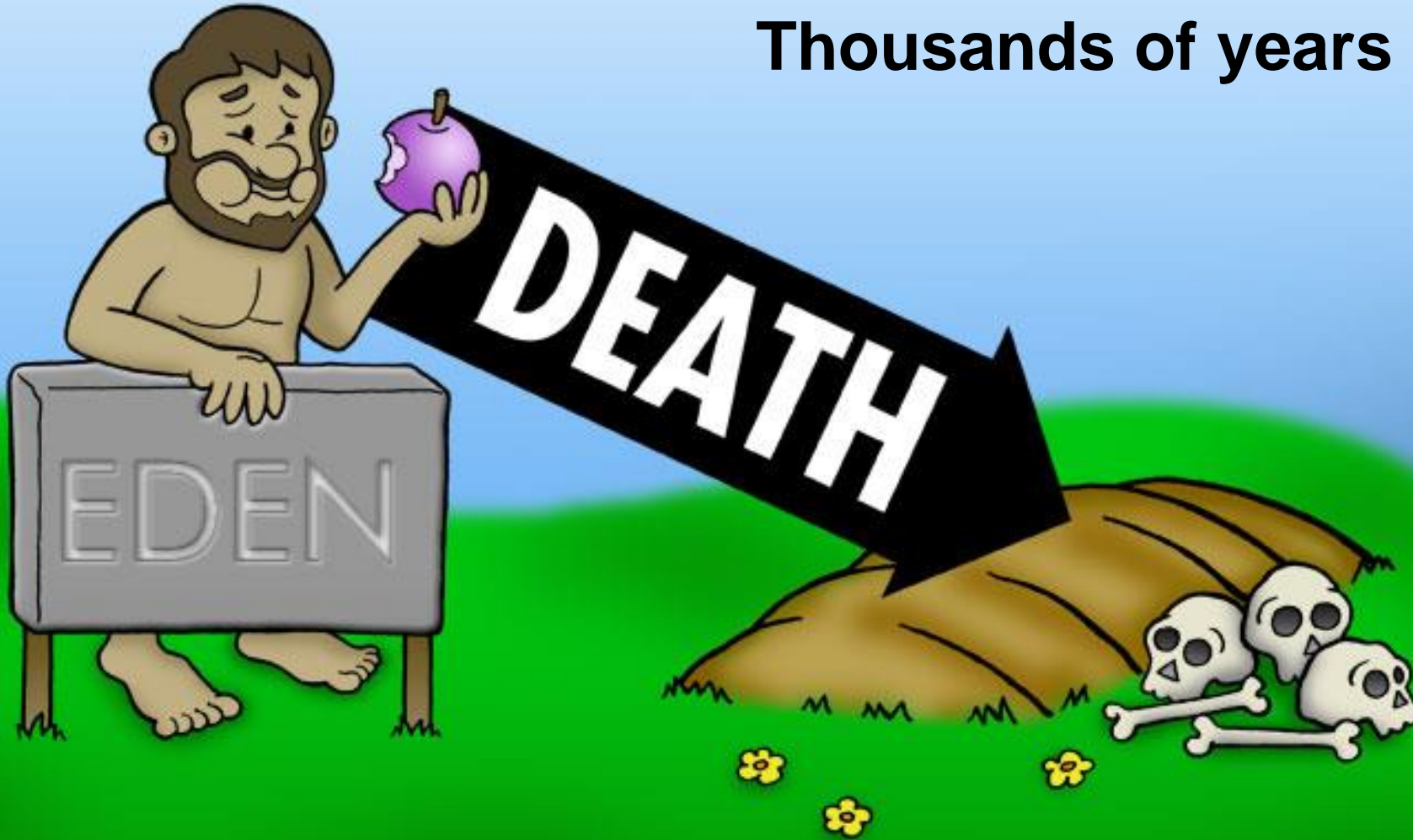
Wherefore, as by one man sin entered into the world, and death by sin; and so death passed upon all men, for that all have sinned:

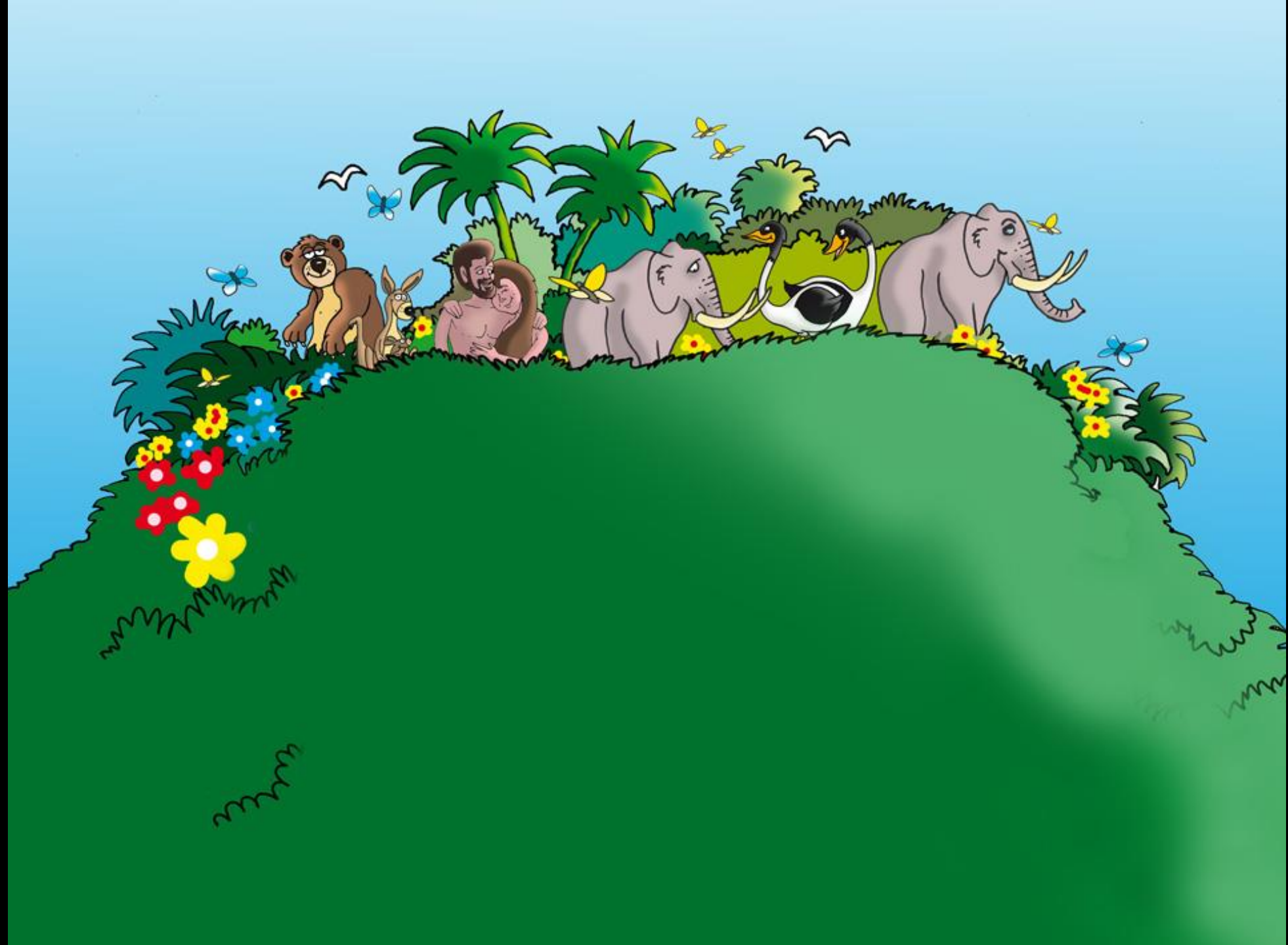


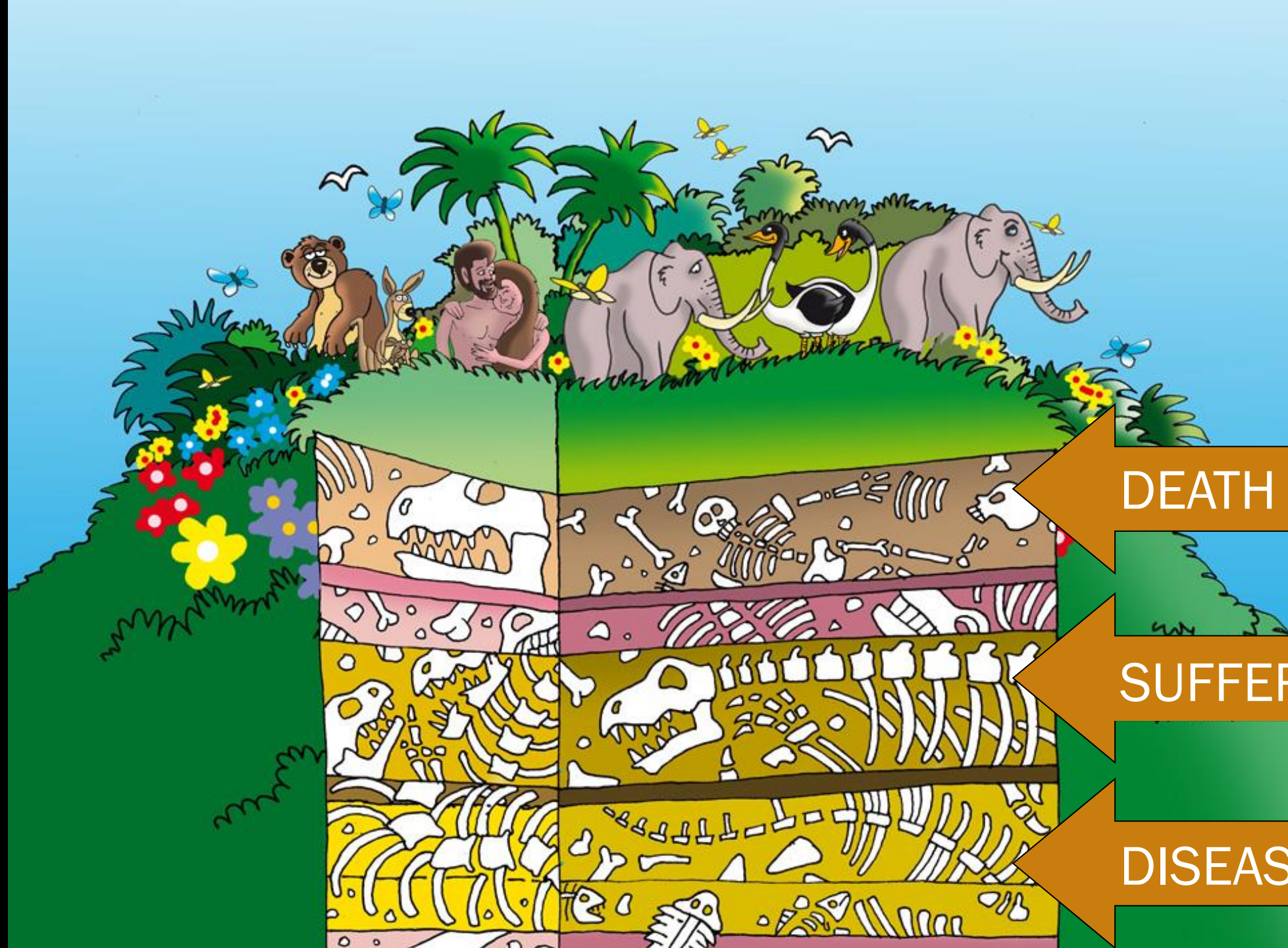
Romans 5:12

Creation

Thousands of years





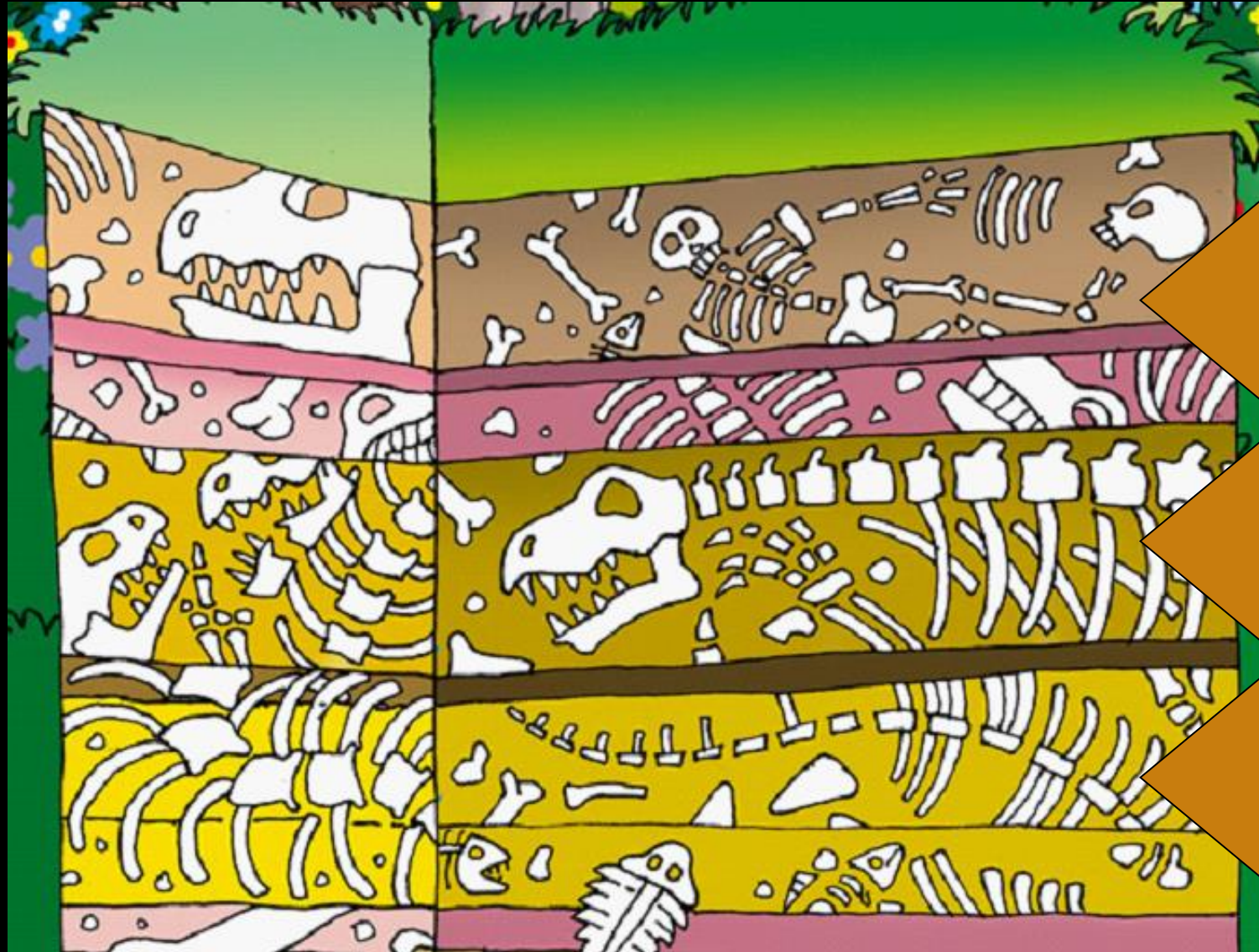


DEATH

SUFFERING

DISEASE

Noshi's Record



DEATH

SUFFERING

DISEASE

INSELBERGS

EVIDENCE FOR RAPID FLOOD RUNOFF

Michael Oard

AS THE world's continents were uplifted from the waters of the global Flood, they were greatly eroded.¹ During this massive erosion, the rocks that weren't pulverized were transported hundreds of kilometres toward the oceans.² The enormous power of the receding water, relentlessly shaving off the surfaces it flowed over, left behind large flat areas known as planation surfaces,³ along with coastal Great Escarpments,⁴ large natural bridges, and freestanding arches. Scientists studying conventional geomorphology⁵ find all these features puzzling because they ignore the Flood and rely only on slow erosion

over millions of years, which does not work.⁶

The mystery of inselbergs

Tall erosional remnants are another feature that puzzles secular scientists.⁷ Although there are other terms for such prominent leftovers from erosion, they are generally called 'inselbergs'. An inselberg (from the German = 'island mountain') is: "A prominent, isolated residual knob, hill, or small *mountain of circumdenudation*, usually smoothed and rounded, rising abruptly from and surrounded by an extensive lowland erosion surface . . ."⁸ The planation

surface usually surrounding the structure represents the flat 'sea' from which the isolated structure juts, like an oceanic island. ('Circumdenudation' – all around it has been eroded away.)

Impressive inselbergs

Thousands of tall inselbergs are found on all continents. Uluru (Ayers Rock) in central Australia is one of the most famous.⁹ It stands 350 metres (1,150 feet) above a flat desert floor (figure 1). Its east and north edges are flanked by a buried pediment (i.e. a planation surface formed by water at the foot of a

mountain, mountains, or a ridge). Uluru is a surface erosional remnant carved from a huge sandstone body, one that continues some 6,000 m (20,000 ft) below the surface. The sandstone rock layers in Uluru are almost vertical,¹⁰ indicating that, before the rock was eroded, it was tipped up and subsequently eroded leaving the erosional remnant. The origin of Uluru remains a mystery for conventional long-age geology, since its survival was not due to the type of rock. Indeed, it's largely composed of feldspar-rich 'arkose' sandstone, and feldspar would have weathered into clay if it had been exposed for millions of years.¹¹ According to one secular scientist, "The early geomorphological history and the fundamental reasons for Ayers Rock [Uluru] remain obscure, though various possibilities have been suggested."¹²

Other notable inselbergs include Spitzkoppe (figure 2) which towers about 600 m (2,000 ft) above the Namib Desert, southwestern Africa.¹³ This desert is a gravel-capped planation surface in the country of Namibia, west of the Great Escarpment in southern Africa.

The famous Sugarloaf Mountain, 400 m (1,300 ft) tall, and other granite residuals (leftover remnants of erosion) bordering the Rio de Janeiro harbour of Brazil are also inselbergs.

Stone Mountain, Georgia, is one of the most famous ones in the eastern United States.

In the southwestern USA, Monument Valley on the border of Utah and Arizona contains an impressive group of inselbergs. These sedimentary erosional remnants stand about 300 m (1,000 ft) above the wide valley.

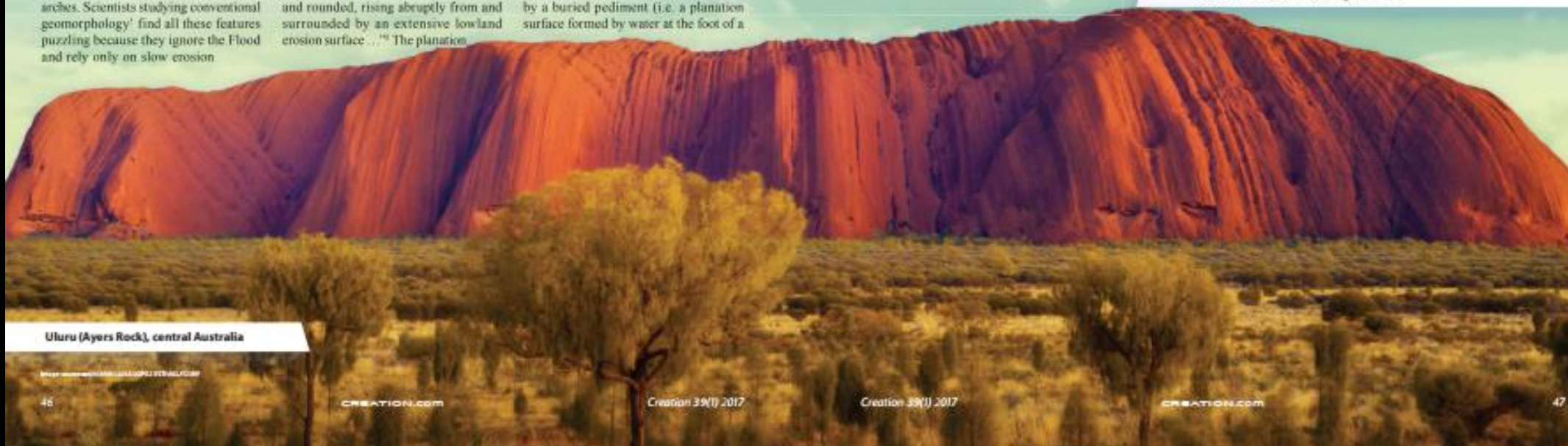
An unusual and beautiful type of inselberg that was carved from limestone and is what is called "tower karst". The most impressive examples are found in China (figure 3) and southern Thailand.



Figure 1. Uluru (Ayers Rock), central Australia



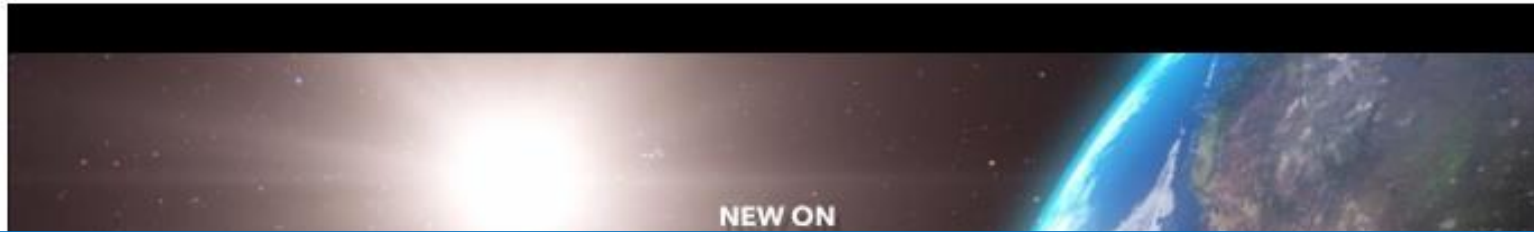
Figure 2. Spitzkoppe in the Namib Desert of Namibia; at 600 metres (2,000 ft) above the surrounding planation surface, it is one of the tallest inselbergs in Africa



Uluru (Ayers Rock), central Australia



The most asked questions about origins ... [answered](#)



CREATION.com



Video: Creation.com Talk - Did Life Come to Earth From Outer Space?

[More recent articles](#)

Connect.creation.com

CONNECT

Free email
newsletter

INFObytes



**CREATION
MINISTRIES
INTERNATIONAL**
INFObytes

**Were dinosaurs on
Noah's Ark?**

Several questions
about dinosaurs on
Noah's Ark answered.

READ MORE



Light, life and the glory of God

Supernatural light appears in many places in Scripture, and helps us explain how there could be days before the sun.

[Read more](#)



Can dinosaurs falsify evolution?

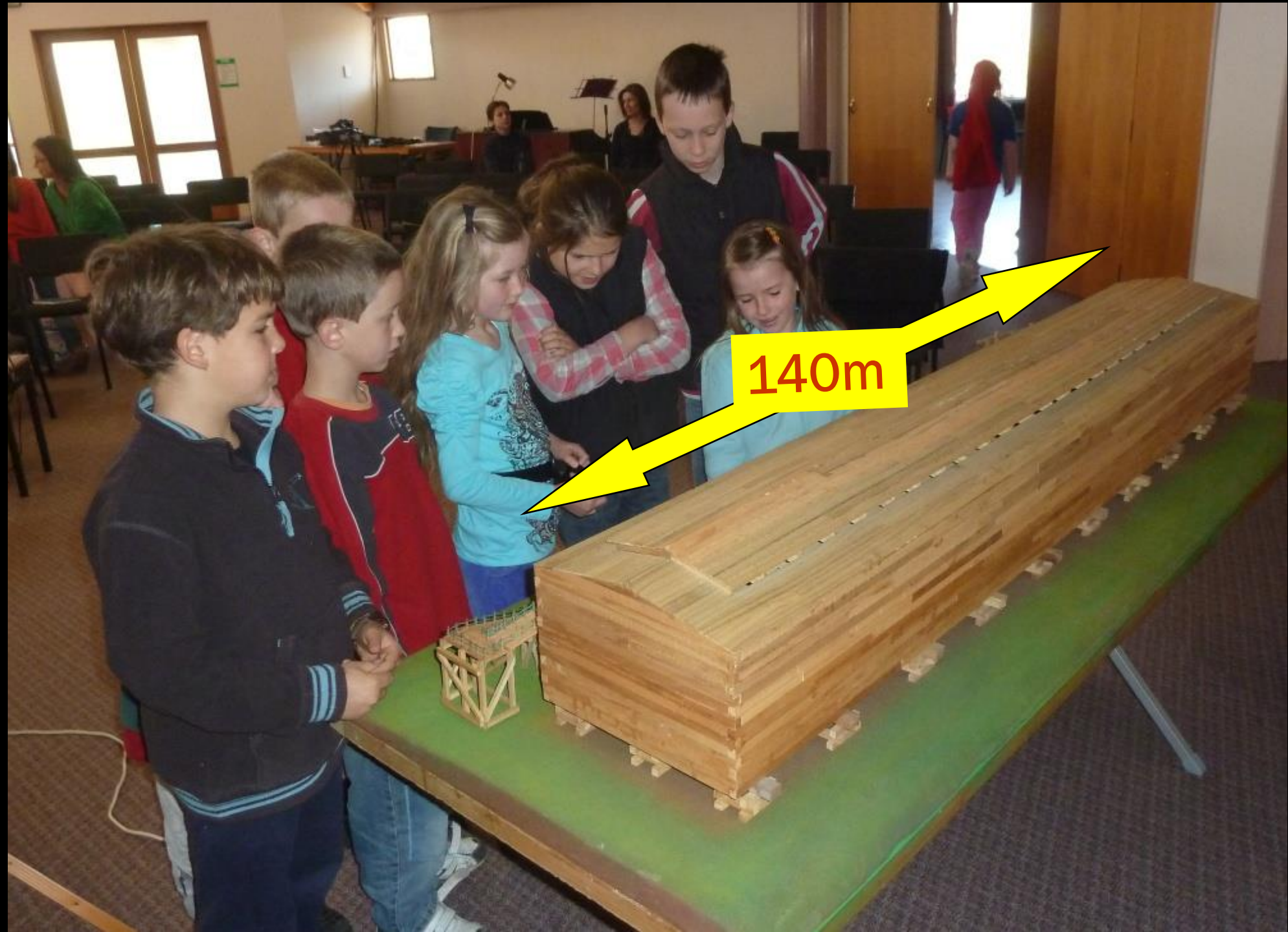
Dinosaurs present several challenges for the evolutionary story. [Read more](#)



Do the miracles of the Bible have natural explanations?

We respond to a list of attempted naturalistic explanations for the miracles of the Bible. [Read more](#)

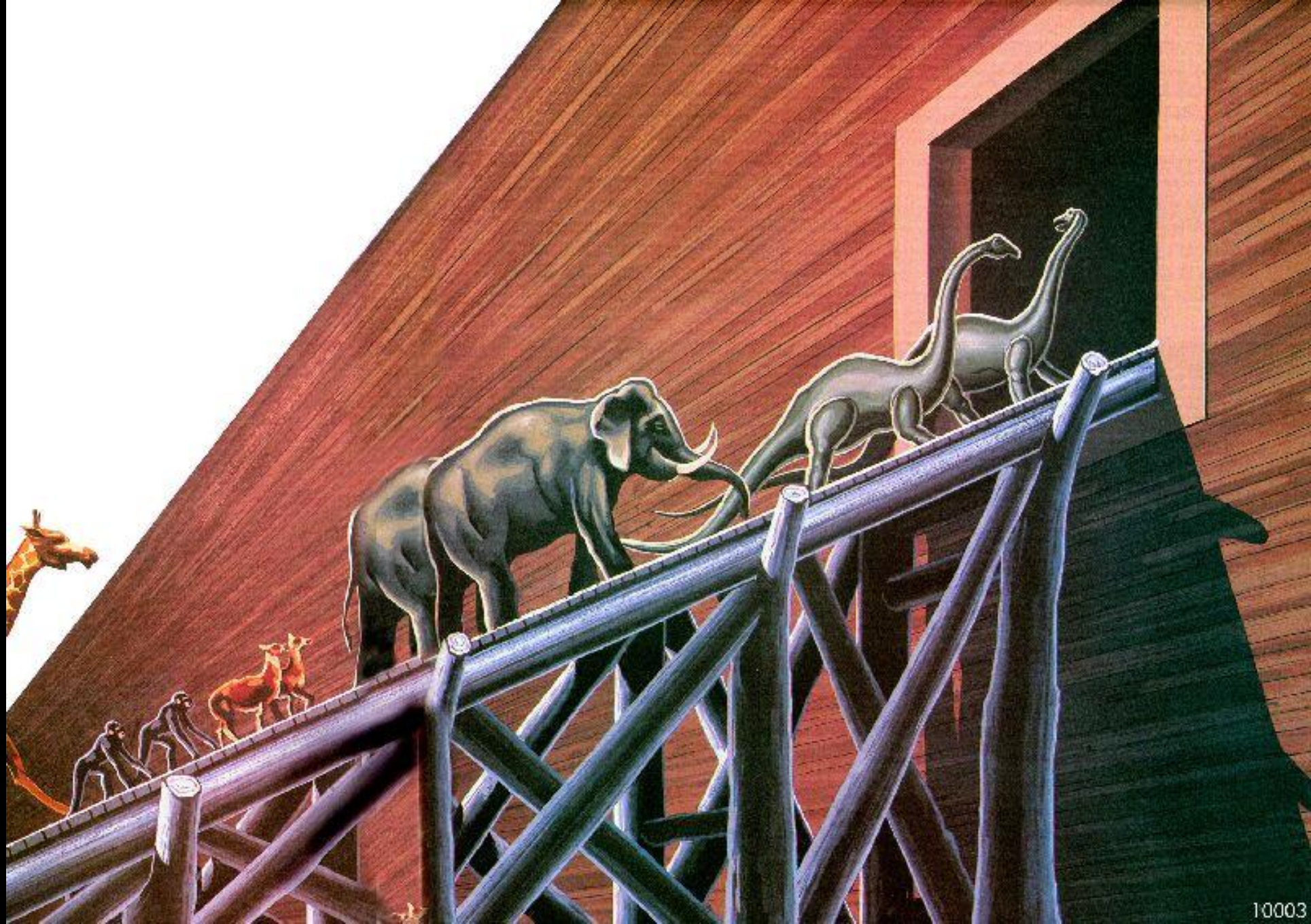
**CREATION
MINISTRIES
INTERNATIONAL**



140m

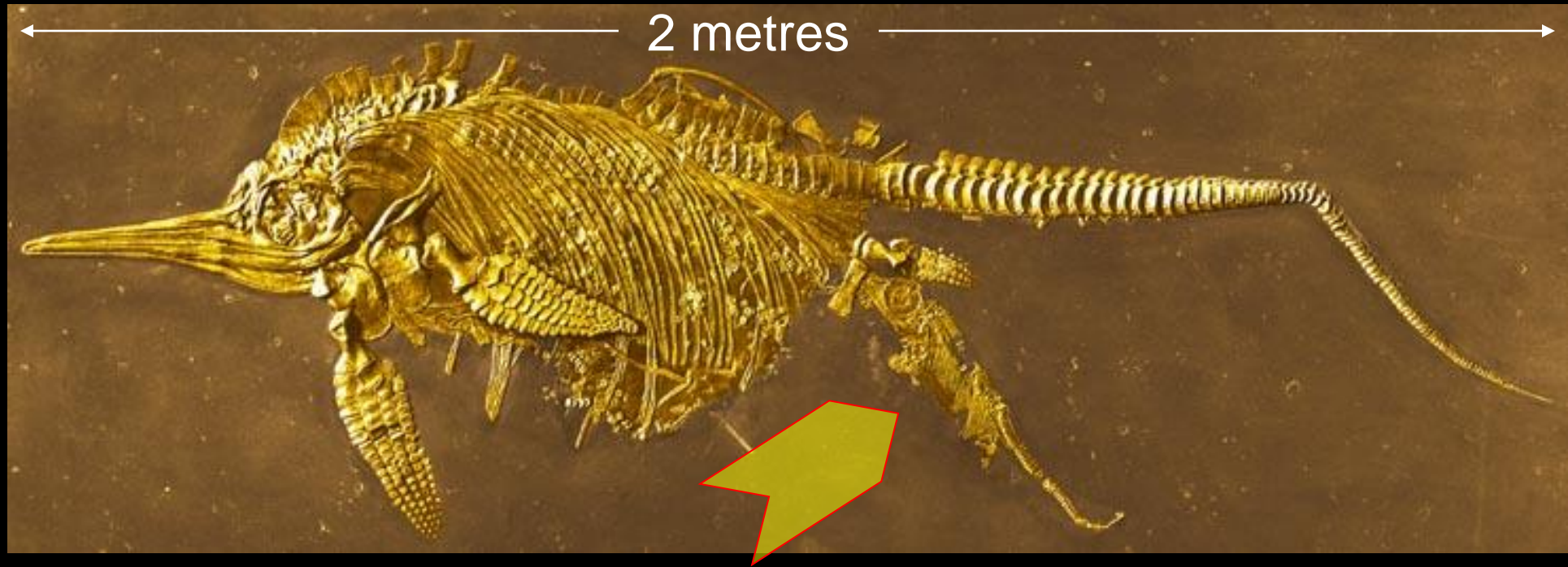


15,000 tonnes
Stable Design

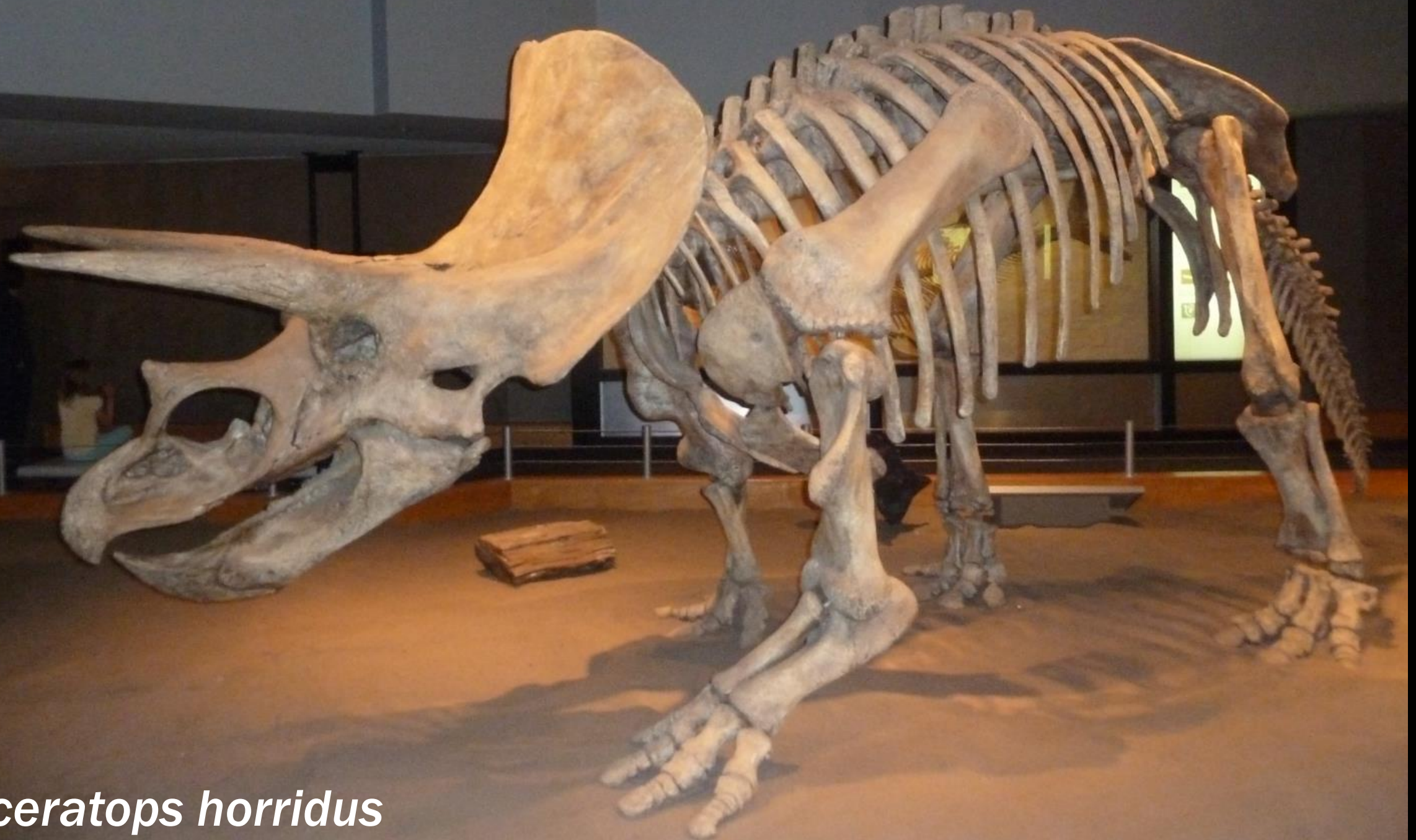




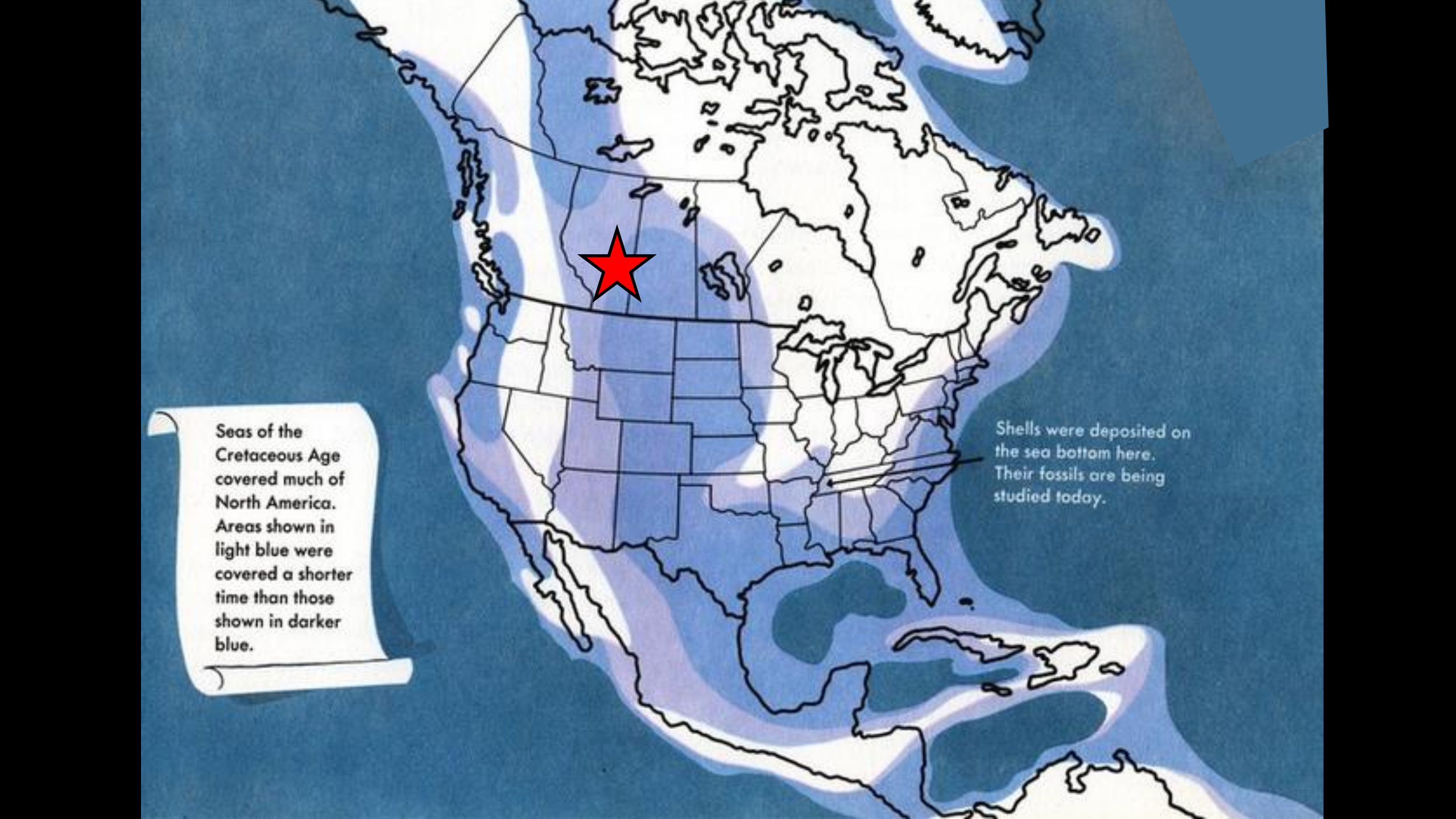




Ichthyosaur giving birth!
--'snap frozen in time'



Triceratops horridus



Seas of the Cretaceous Age covered much of North America. Areas shown in light blue were covered a shorter time than those shown in darker blue.

Shells were deposited on the sea bottom here. Their fossils are being studied today.



ROYAL TYRRELL
MUSEUM

RESTRICTED AREA
KEEP OUT



A herd of centrosaurs (a type of horned dinosaur) drowning in Noah's Flood 4500 years ago in what is now Alberta, as depicted in this illustration. They left behind what could be the world's largest dinosaur graveyard. Credit: Royal Tyrrell Museum.



The Geology Transformation Tool

The geology transformation tool

A new way of looking at your world

by *Tas Walker*

Published: 3 September 2020 (GMT+10)

Perhaps you have seen a report in the media about a rock outcrop 800 million years old and wondered how that fits with the history of the Bible. We confront the same puzzle when we read about a fossil dinosaur that lived in Jurassic times. Or we may visit a tourist site with a sign that speaks about a volcano forming 25 million years ago.

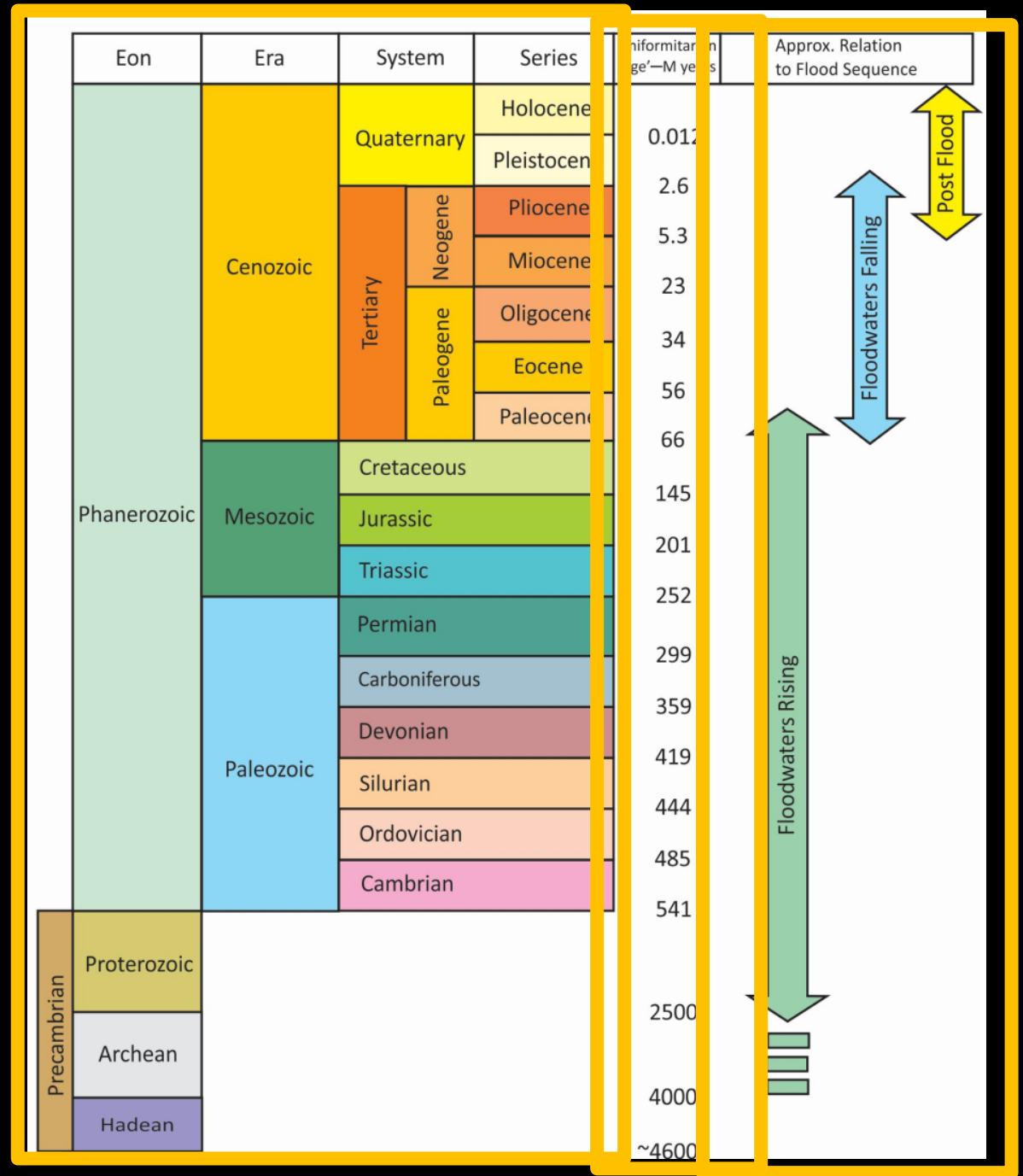
If you would like to make sense of your world from a biblical perspective, the simple diagram in figure 1 is what you are looking for. It allows you to work out a first, ballpark understanding of where each situation you encounter relates to the true history of the universe, that is, to the history presented in the Bible.



The Three Sisters rock formation in Katoomba's Blue Mountains, Australia

Explanation of the diagram

The Geology Transformation Tool



Eon	Era	System	Series	Uniformitarian 'Age'—M years	Approx. Relation to Flood Sequence		
Phanerozoic	Cenozoic	Quaternary	Holocene	0.012			
			Pleistocene				
		Tertiary	Neogene	Pliocene		2.6	
				Miocene		5.3	
				Oligocene		23	
				Eocene		34	
			Paleogene	Paleocene		56	
				Cretaceous		66	
				Jurassic		145	
				Triassic		201	
	Mesozoic	Permian		252			
				299			

Mount Warning

Triceratops

Three Sisters

Post Flood

Flood



Opal



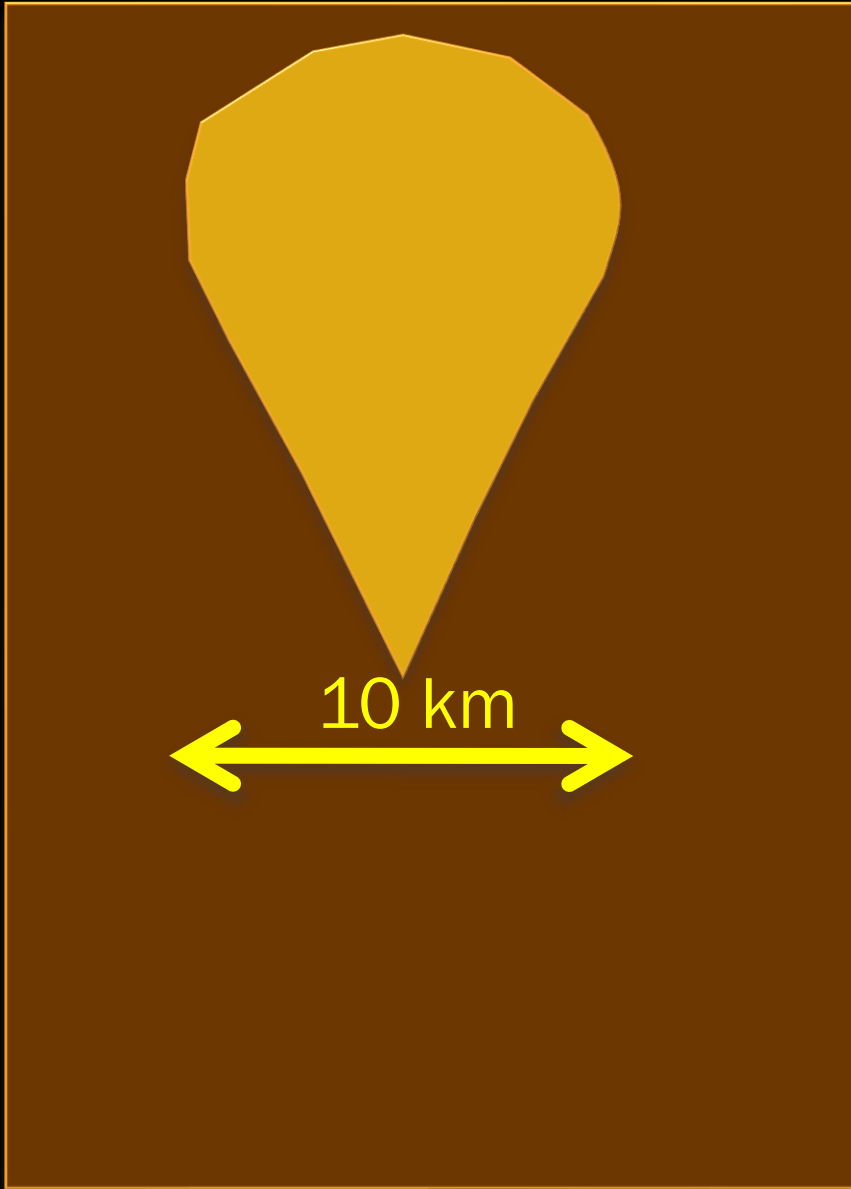


Castle Hill, Townsville



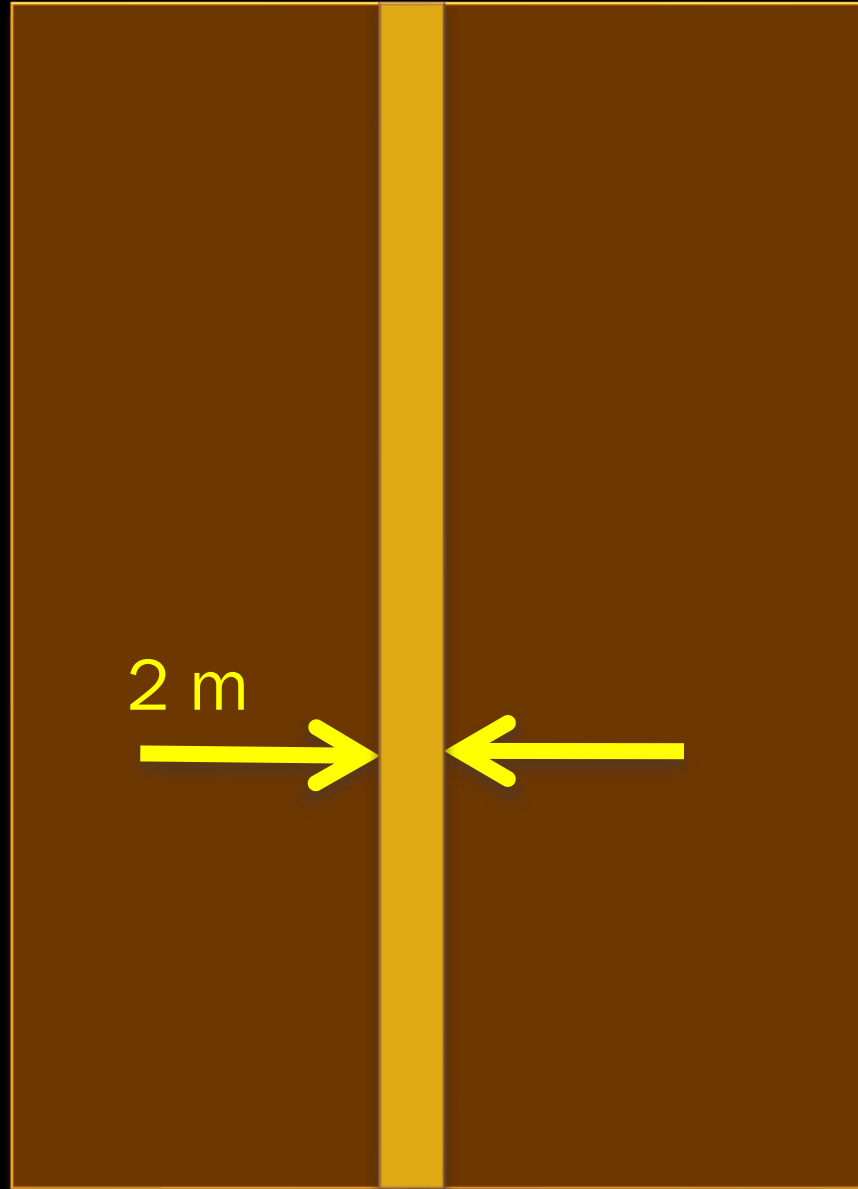


Think of a lava lamp

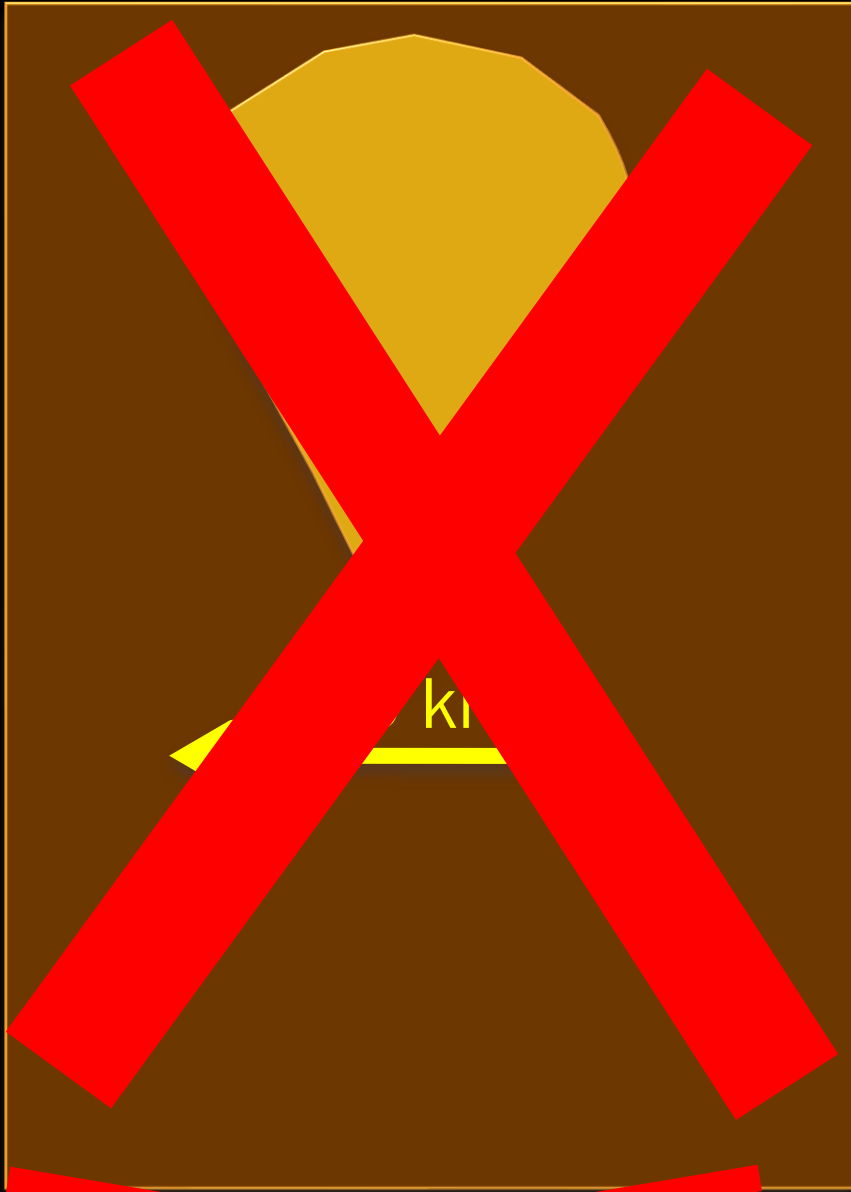


Slow and gradual

versus

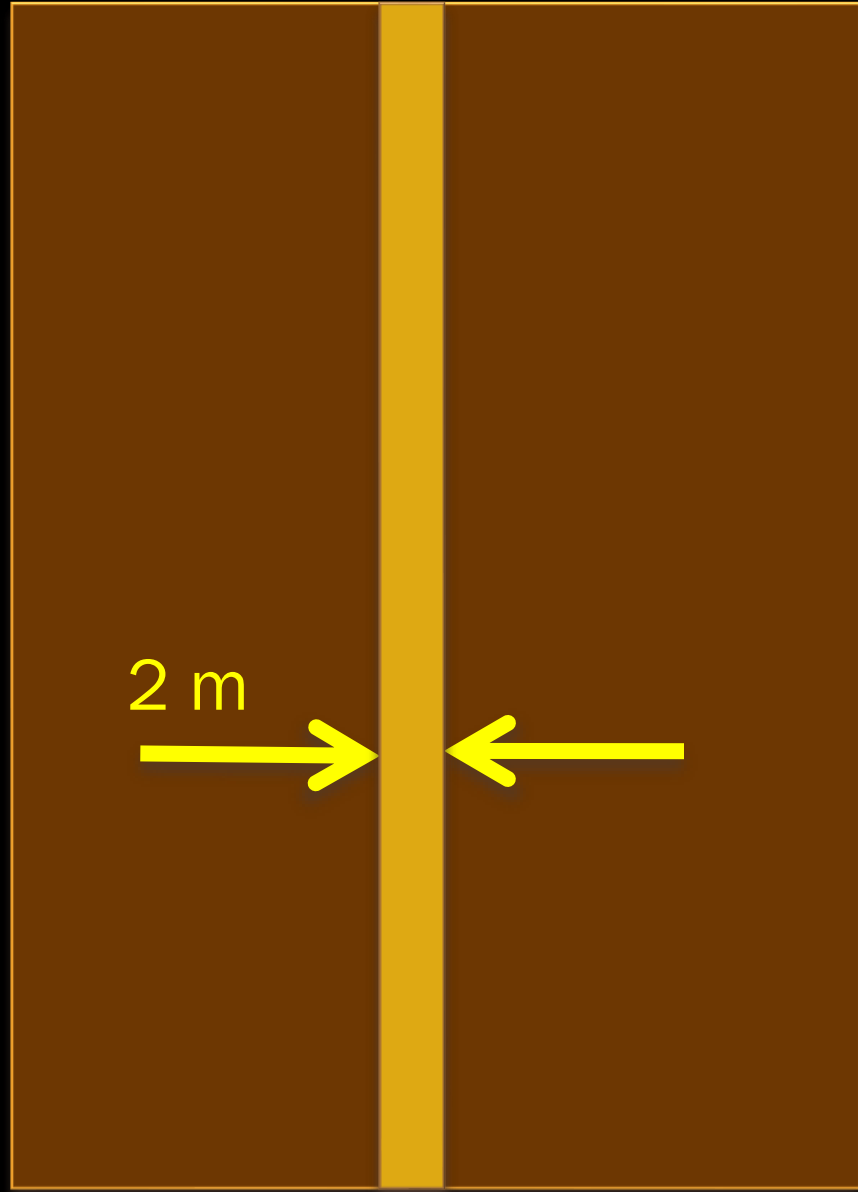


Catastrophic



~~Slow and gradual~~

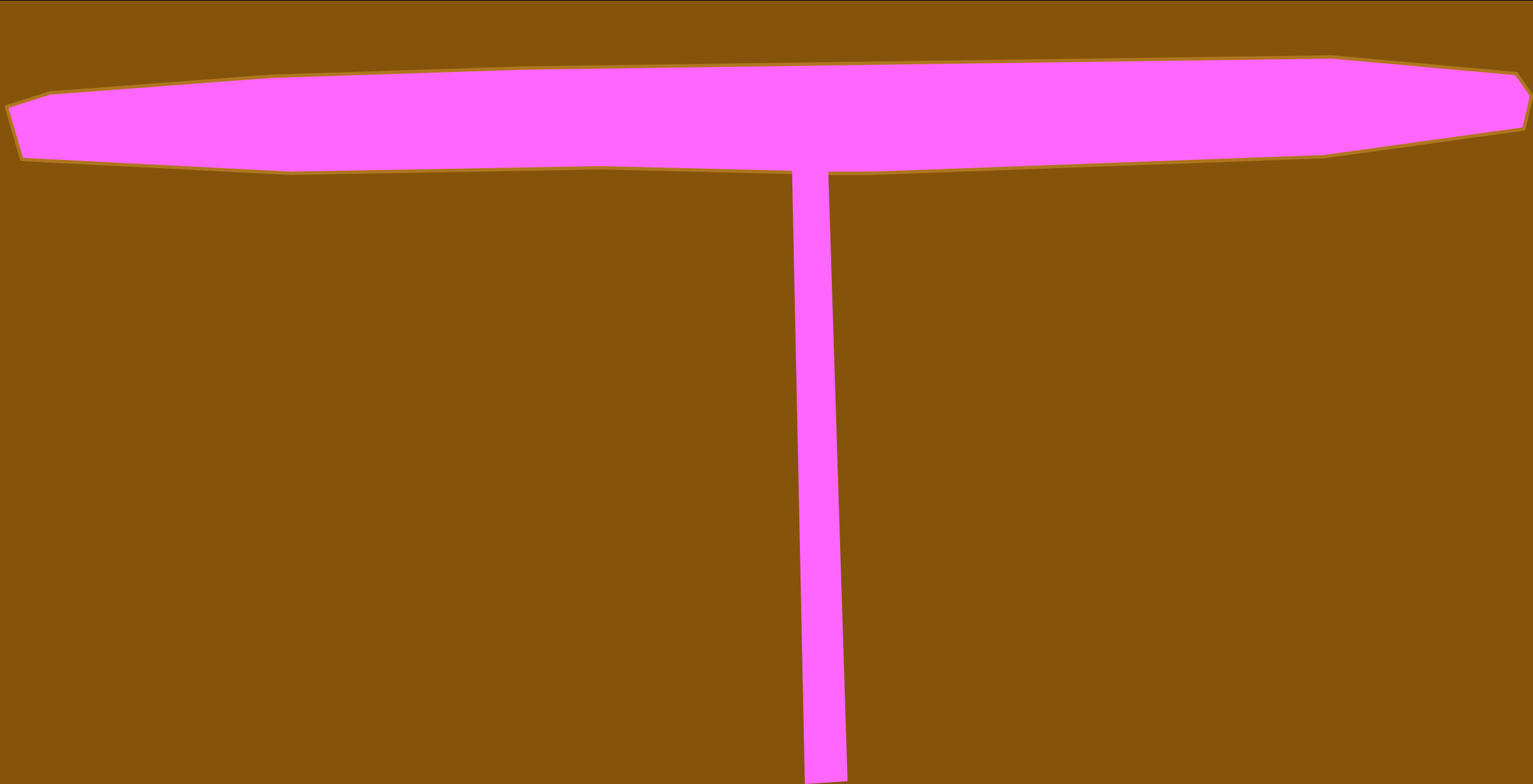
versus



Catastrophic



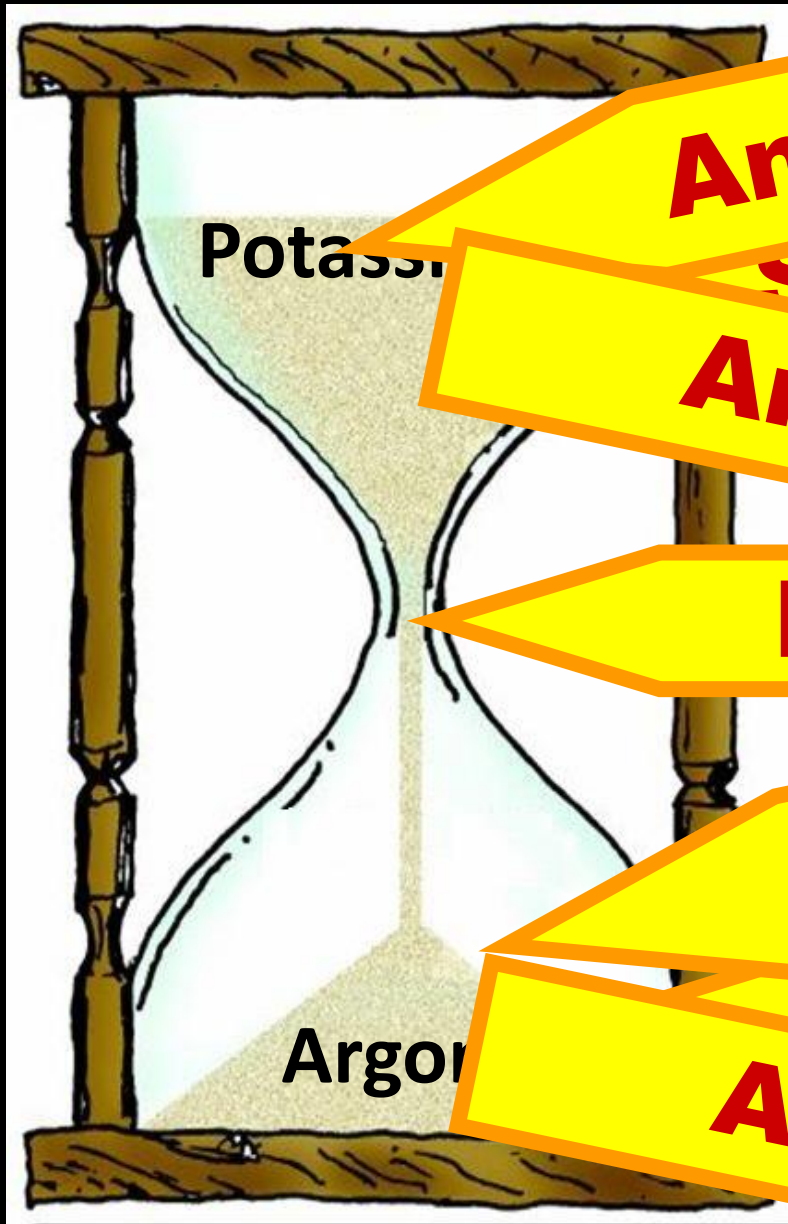
While floodwaters were receding





**CATASTROPHIC
IN ITS
SUDDENNESS**

Castle Hill, Townsville



Any gained?

Starting amount?

Any lost?

Rate?

Any gained?

Starting amount?

Any lost?



K-Ar Ages (years)

Whole rock	350,000
Amphibole etc.	900,000
Pyroxene	2,800,000

An aerial photograph of Mount St. Helens. In the foreground, a large, dark, jagged lava dome sits on a snow-covered slope. The middle ground shows a wide, ash-covered valley with a large, dark blue lake. In the background, the snow-capped peak of Mount St. Helens rises against a clear blue sky. A red triangle is overlaid on the top left of the image.

**The lava dome at Mount St Helens
debunks dating myths**

Erupted 10 years before

ONLY SURE WAY

Birth Certificate

Bill Jones

Doctor Who Saw
Nurse Was There

EYEWITNESSES

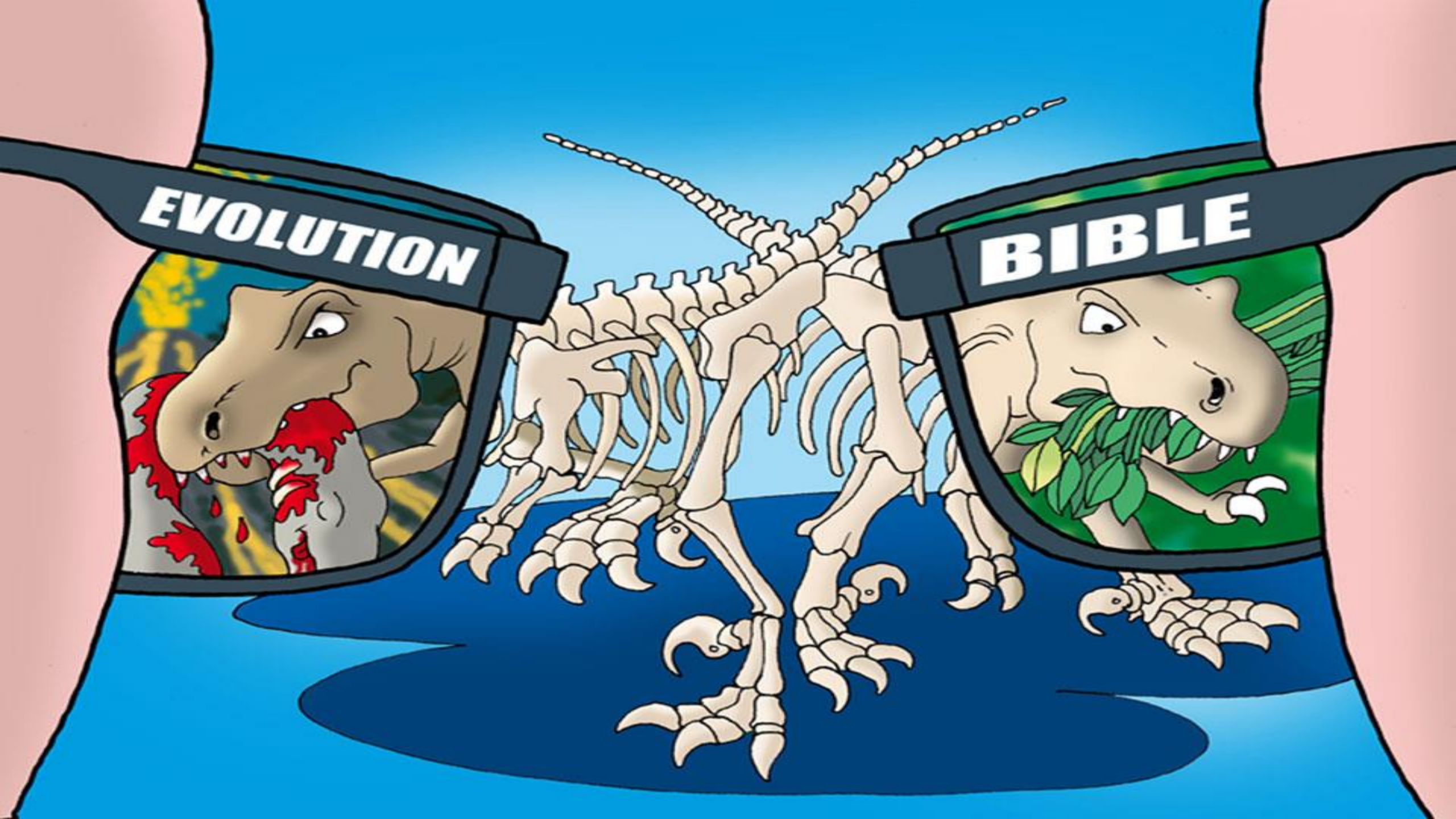
WRITTEN

RECORD



Founding of Australia

26
January
1788



EVOLUTION

BIBLE

SOME TAKE-HOME POINTS

Millions of years are not fact

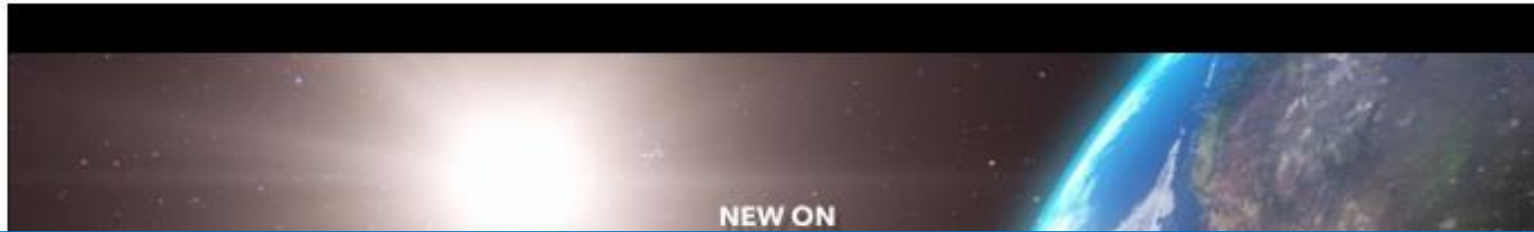
MOYs destroy the gospel

Bible is true history of world

Bible explains the evidence

Protect yourself and your family

The most asked questions about origins ... [answered](#)



CREATION.com



Video: Creation.com Talk - Did Life Come to Earth From Outer Space?

[More recent articles](#)

Connect.creation.com

CONNECT

Free email
newsletter

INFObytes



CREATION MINISTRIES INTERNATIONAL
INFObytes

Were dinosaurs on Noah's Ark?
Several questions about dinosaurs on Noah's Ark answered.
[READ MORE](#)

 **Light, life and the glory of God**
Supernatural light appears in many places in Scripture, and helps us explain how there could be days before the sun.
[Read more](#)

 **Can dinosaurs falsify evolution?**
Dinosaurs present several challenges for the evolutionary story. [Read more](#)

 **Do the miracles of the Bible have natural explanations?**
We respond to a list of attempted naturalistic explanations for the miracles of the Bible.
[Read more](#)

CREATION MINISTRIES INTERNATIONAL



DID YOU KNOW...

Venus spins ba



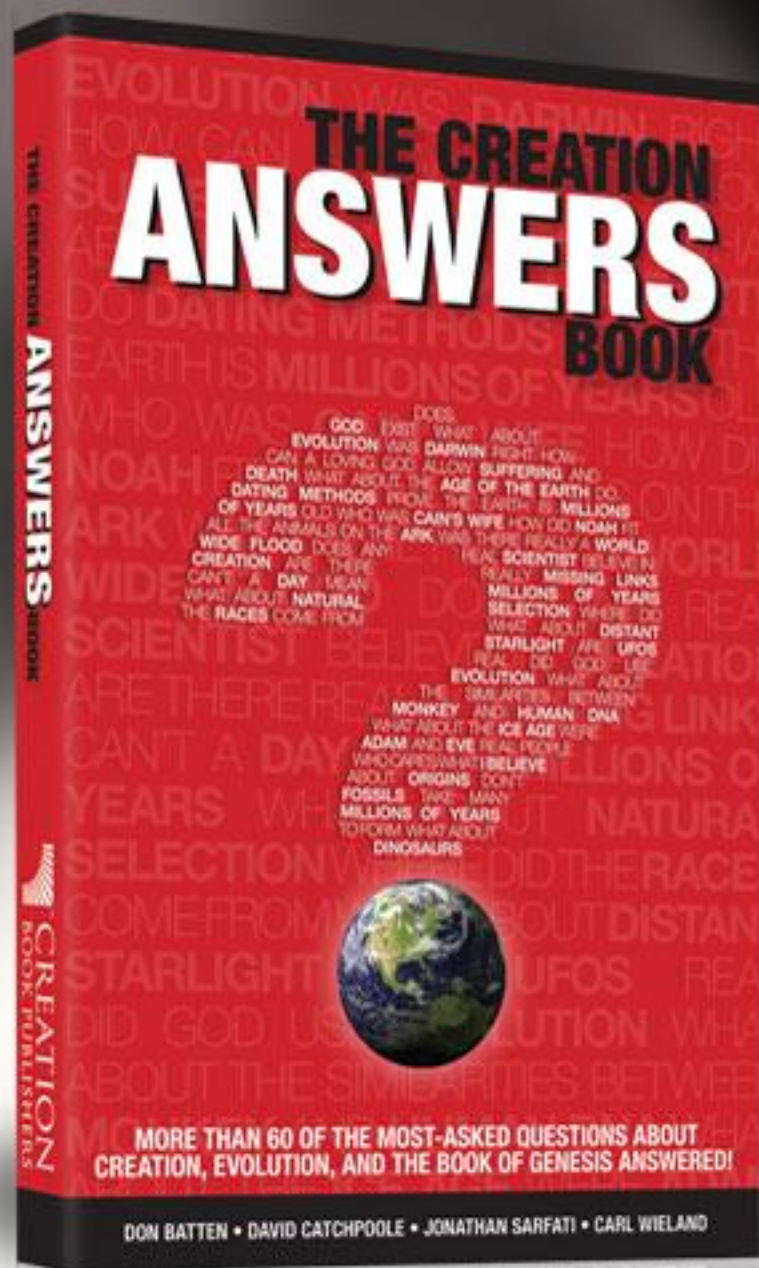
DID YOU KNOW...

Cows have a compass?



DID YOU KNOW...

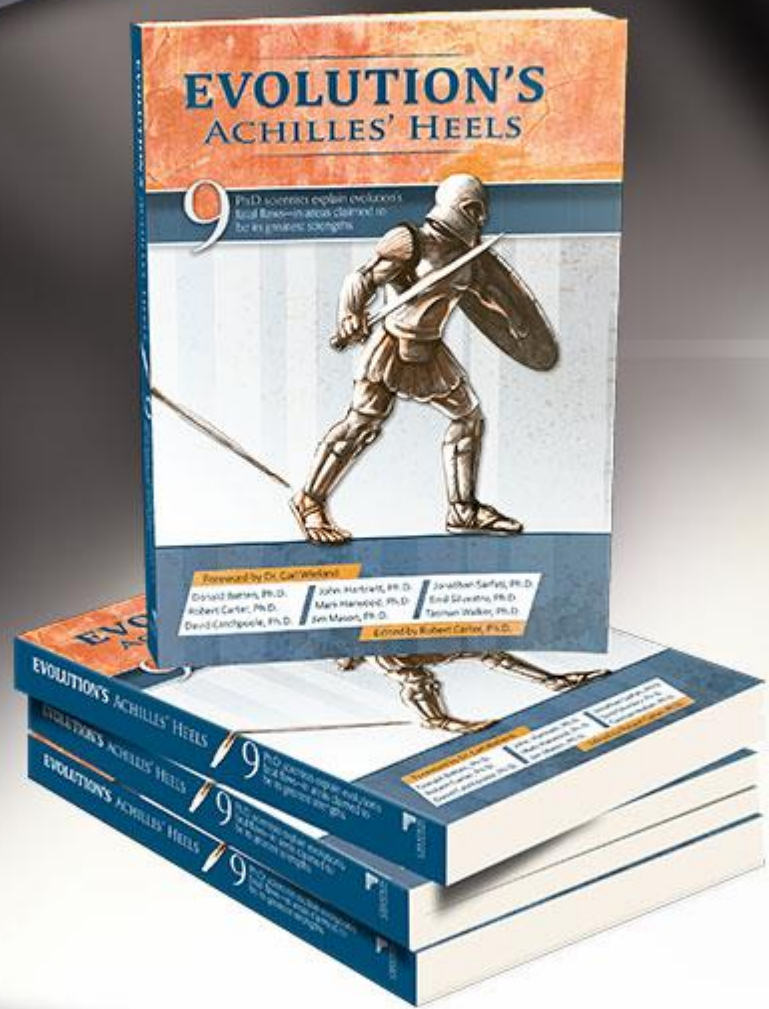
Soft tissue has been found in dinosaur bones?



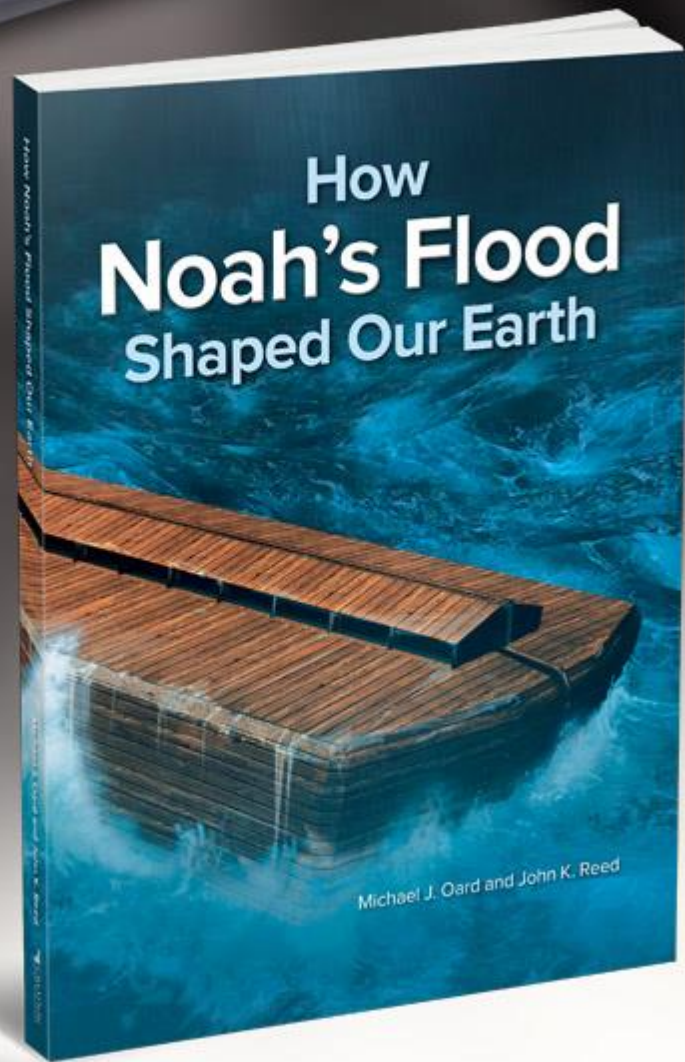
Book

The Creation Answers Book

By D. Batten, D. Catchpole, J. Sarfati & C. Wieland



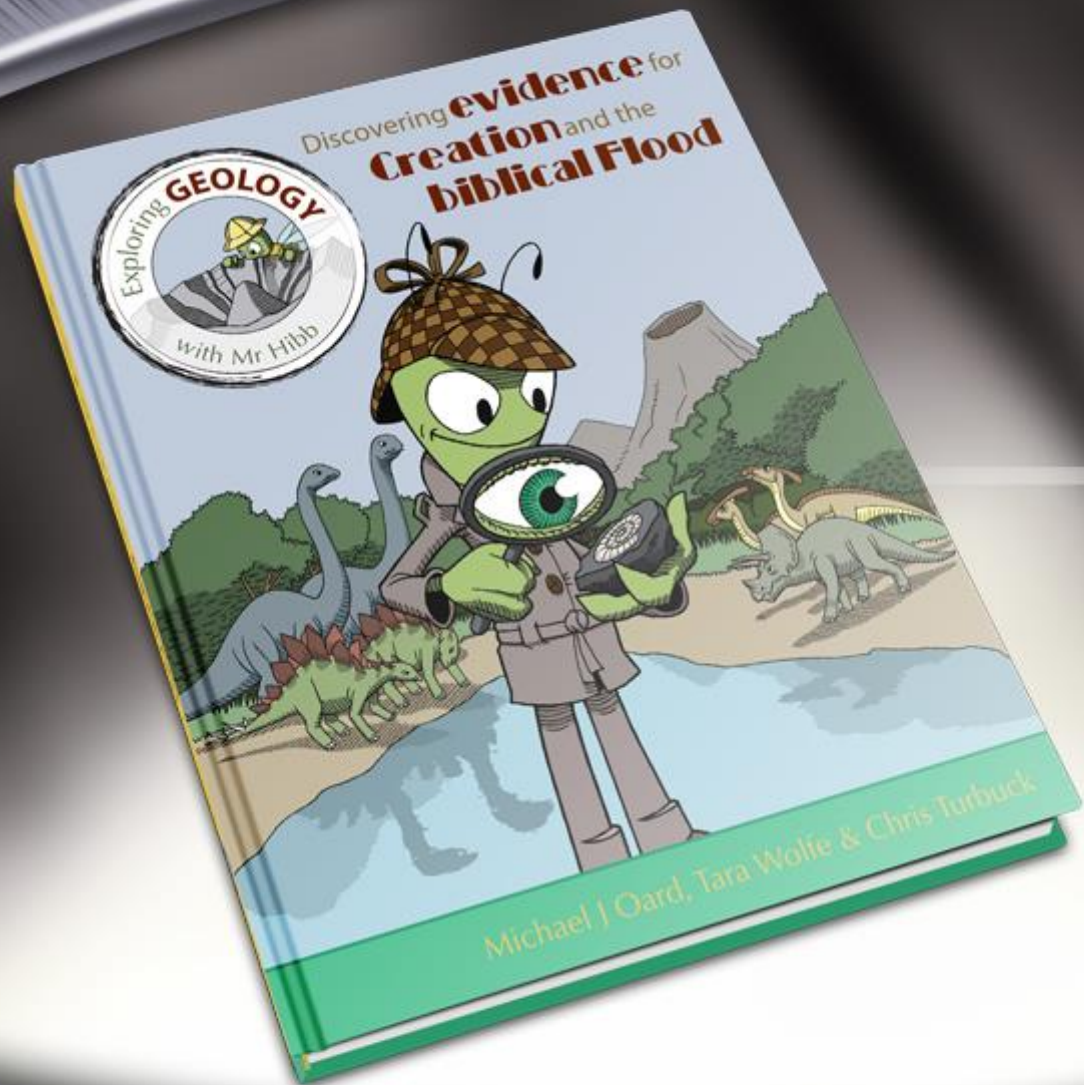
Evolution's Achilles' Heels



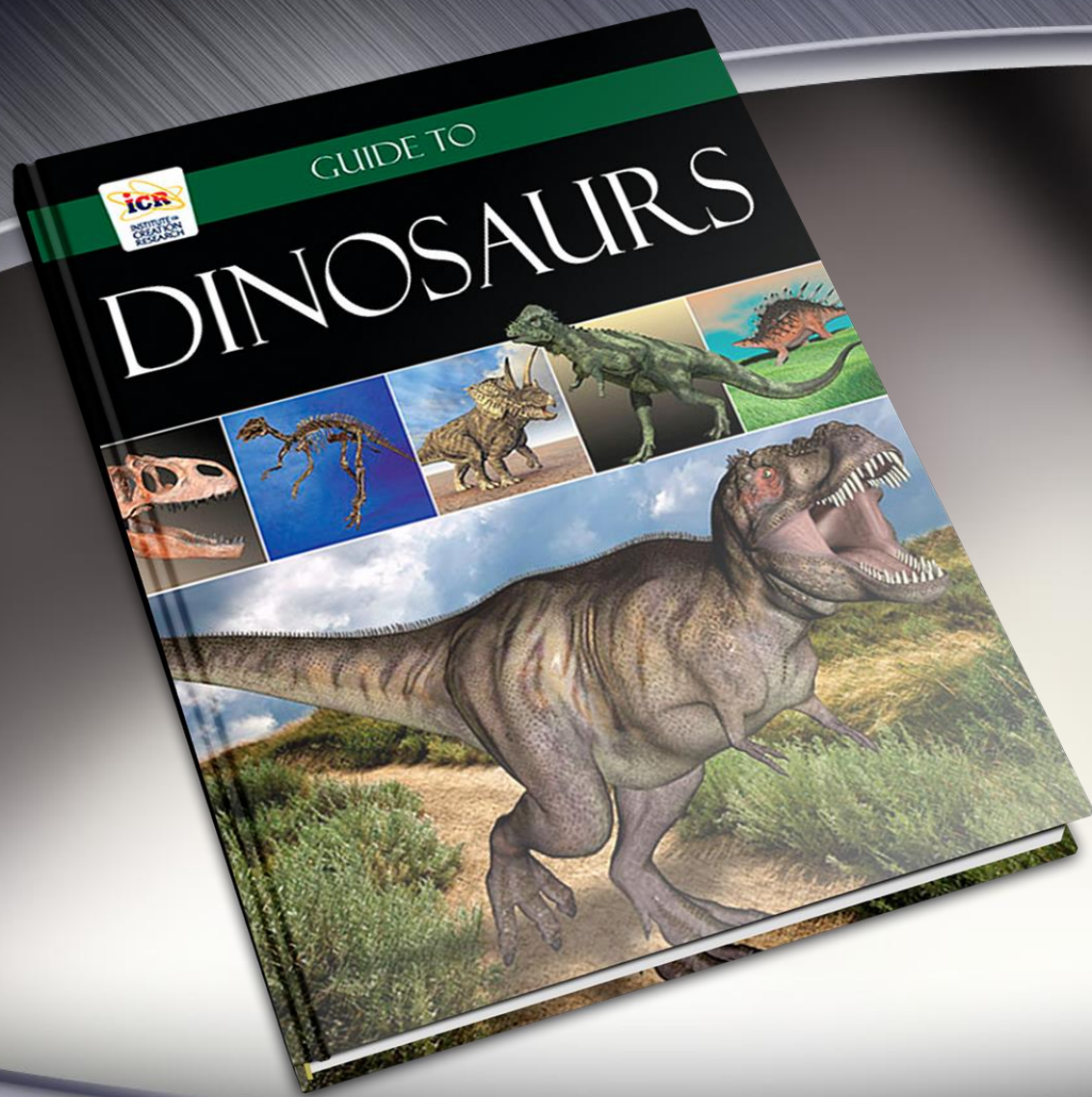
BOOK

How Noah's Flood Shaped Our Earth

Michael J. Oard
& John K. Reed



Exploring Geology with Mr Hibb



Guide to Dinosaurs



THE HUMAN BRAIN MAKING BROWN EYES BLUE ARTIFICIAL MARTIAN SKY

NOAH'S ARK ON A COIN
The oldest coin depicting a biblical scene shows Noah's Ark

WHY DON'T WE LIVE AS LONG AS THE ALBATROSS?
The recorded lifespans of pre-Flood people were much longer

'KILLER' CATERPILLAR WITH A SECRET
A tiny caterpillar can make a meal of its own kind

THE ALBATROSS AND THE FLOOD

Given that albatrosses today can spend up to five years at sea, why did they need to be on Noah's Ark to survive the Flood?



EGGSHELL NANOSTRUCTURE SELF-CLONING CRAYFISH

ISSN 0819-1016 Vol. 45 No. 6 2019 AUG

STRIPE



DINOSAUR EGGS MEDIEVAL 'DRAGONS' ANCIENT BIOPI

ISSN 0819-1016 Vol. 45 No. 1 2019 APR

JUST LIKE NATURAL ROCK
Ancient Romans could teach modern man a thing or two about concrete

THE CREATOR'S COVENANT
Only God could make the covenant in Deuteronomy, because He is the Creator

MORE WORLDWIDE FLOOD EVIDENCE
Globally widespread and obvious, pediments are structures formed by the receding waters

CUTE & CUTE

LOVE OR LOATHE THEM, RABBITS HELP US MAKE SENSE OF



DIPLODOCOID DINO DISCOVERY WHERE WAS EDEN? THE BLUE ROSE

ISSN 0819-1016 Vol. 51 No. 7 2019 AUG

THE OCTOPUS SO STRANGE IT'S 'ALIEN!'

THE OCTOPUS and its biology doesn't seem to fit its evolutionary 'family tree'

'OUT OF AFRICA' STRUGGLING
Yet another discovery that doesn't fit the popular 'origin of man' theory

AMAZINGLY ENGINEERED
How a baby's circulation wondrously 'switches over' at birth

SUPERCAPACITOR DESIGN INSPIRATION
The design of branches and leaves provides inspiration for maximizing charge storage



CREATION MAGAZINE SUBSCRIBE TODAY!

1. Select subscription length

1 year: \$32
BONUS + Free Book Value + 10% More Free Value!

3 years: \$85
BONUS + Free Book Value + 10% More Free Value!

This is a renewal



4 ISSUES PER YEAR

2. Fill in your details (complete all fields using block letters)

Title Full Name

Address

Phone

Email for delivery of digital issues

I would also like to receive Creation ePapers—CMI's free email newsletter

OR GIVE A GIFT SUBSCRIPTION!
Enter the recipient's details below

Full Name

Postal Address

Don't forget: enter your details on the left

- 3. Getting other creation resources? Browse and choose them now.**
- 4. Take this completed form, with any other purchases, to the CMI resource desk**

Only available TODAY with a 3-year subscription



\$15 VOUCHER
This voucher can be applied to any creation resources purchased here today—excluding subscriptions

CREATION MINISTRIES INTERNATIONAL PO BOX 107181 RICHMOND, VA 23210-0718 AND 615 854-1111 EXT 5000 • CREATION.COM/WACAD14

1 YEAR SUBSCRIPTION \$32.00

3 YEAR SUBSCRIPTION \$85.00



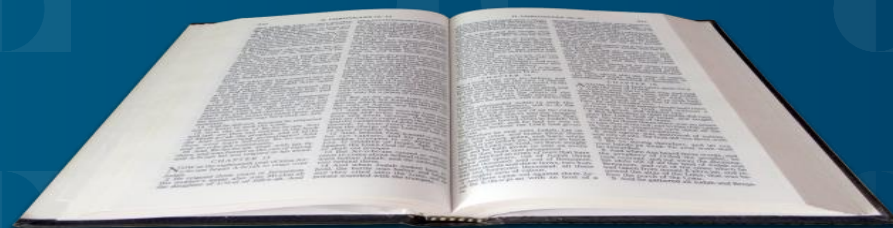


\$15 VOUCHER
This voucher can be applied to any creation resources purchased here today—excluding subscriptions

Only available **TODAY** with a 3-year subscription

NOT REDEEMABLE FOR CASH

If I have spoken to you of earthly things and you do not believe; how then will you believe if I speak of heavenly things?



John 5:12

